

COXO®

Professional Dental Manufacturer
Since 2003

Good Price

Better Quality

Suitable Delivery

Perfect Service

COXO MEDICAL INSTRUMENT CO., LTD.

Add: Building A4, A Zone, Guangdong New Light Source Industrial Base,
Langsha, Luocun, Shishan town, Nanhai District,
Foshan City, Guangdong Province, China
Tel: +86 757 66692050 Fax: +86 757 81800058
Web: www.coxotec.com
Email: coxotec@gmail.com

COXO®

Professional Dental Manufacturer
Since 2003



Catalogue 2018-2

COXO 2018-2

2018-2

COXO PROFILE

COXO MEDICAL INSTRUMENT CO.,LTD is a professional manufacturer of dental equipment and fittings research and development. COXO is famous brand in dental equipment field. We have got the approvals of ISO certificates. Most of the products have got the CE certificates.

COXO bought more than 80 sets precision equipment from Japan, Korea and Germany. Each COXO's product is finely crafted, both in design, material selection and manufacturing process are to achieve meticulous excellence.

Our main products are: High and low speed dental handpiece, Curing light, Endodontic treatment, Implant system, Apex locator, Teeth whitening accelerator, Obturation system, Alginate mixer, Amalgamator and all kinds of dental lamps, film viewer etc.

COXO COMPANY will cooperate with the customers for their renovation and improvement by our creative products and service constantly. We hope we will be vibrant partners on a more expansive stage.

Thank all friends who attend and support COXO, warmly welcome to COXO for common development!



COXO Development



CE 0197 ISO 13485

- 2003 ○ Produce control system of dental chair
- 2004 ○ Produce dental chair spare parts, dental light
- 2005 ○ Produce Curing light, Apex locator
- 2006 ● Move to new factory, attend Dental south China exhibition
- 2007 ○ Produce Endo motor, Obturation system
- 2008 ○ Produce Led teeth whitening accelerator
- 2009 ● Set up new CNC workshop, produce handpiece
- 2010 ○ Produce Implant machine
- 2011 ● Set up Electric laboratory
- 2012 ○ Do free RCT training in China
- 2013 ● Move to new factory, more than 15000m2
- 2014 ● Got "National high and new technology enterprises" title from government; produce electric micro motor, 1:5 contro angle
- 2015 ○ Do Implant training in China
- 2016 ○ Set up Foshan Dental Engineering Technology Research and Development Center
- 2017 ● Set up dental engineering technology research and development center of guangdong province
- 2018 ○

COXO[®]
Professional Dental Manufacturer
SINCE 2003



New products

Order name: **C-SAILOR PRO**
Dental implant system



Order name: **C-PUMA INT+**
Dental electrical motors
Brushless LED



Safe
Simple
Practical

Sharp section
High elastic
Quick
efficient



Order name: **CX265-59**
Vertical pressure device



Optic Fiber
For implant

Order name: **C6-22**

Content

Dental implant system	01-04
Endo motors	05-10
Root apex locatorS	11-13
Pulp tester, Caries Detector Device	14
NITI file System	15-18
Obturation system	19-20
Gutta cuts	21
Interproximal enamel kit	22
Dental electric motor	23-26
LED curing light	27-32
Teeth whitening accelerator	33-34
Alginate mixer, Amalgamator	35-36
Sander gun, Combi-suction unit	37
Portable dental unit, dental mobile cart	38
Accessory of electric equipment	39-40
LED Handpiece With Generator	43-44
Optical handpiece	45-47
Clean head system handpiece	48
3 way spray handpiece	49-50
1 way spray handpiece	51-54
Color handpiece	55-56
Nature handpiece	57-58
low speed handpiece	59-61
Contal angle, Air motor, Straight	62-68
Economical complete kit	69
Handpiece accessories	70-74
OEM, ODM Service	76-79
LED dental lamp	81-84
Balance arm, film viewer	85
Pillow frame, Foot pedal, Plastic series	86
Tube serie, Valve series, Cuspidor series	87-89
Oil-free compressor	89



New technology



LED Light

Powerful optic motor
Torque function
Touch control LCD screen
User friendly foot control

Intuitive,
powerful,
safe and reliable



Optic

Double nozzle

low noise and vibration

Light and compact optic motor for speedy and accurate surgery

Patent design, delicate contracted

This product has been applied layout-design patent. Counterfeit must be investigated.



The large size screen ensures that the treatment parameters are visible at any time



illumination and sound can be adjusted

Model: C-SAILOR

Dental implant system



Order name: **C-SAILOR PRO**



Optic Fiber For implant

Order name: **C6-22**

Feature:

- Full touch big screen
The large size screen ensures that the treatment parameters are visible at any time
- Graphical planting process selection, a variety of parameters at a glance
Every planting process is set up to solve the tedious setting
- ad hoc, separate irrigation procedures for ease of use
Cooling and flushing of inner and outer channel
- Built in water supply system with small size, good performance and convenient connection
4 shifts water supply up to 150ml/min
- a new generation of motors with torque of up to 80N.cm
High performance brushless motor, powerful torque output, highly efficient chip structure
- motors and cables can be sterilized at high temperature and pressure
Lighter and shorter motor, long work no fatigue
- LED lighting helps clinicians focus more on the treatment area and make surgery more accurate
High brightness LED light source with brightness up to 30000lux
- illumination and sound can be adjusted
Give doctors more autonomy in setting up options
- multifunctional pedal controller
Aseptic operation can be achieved, giving the maximum freedom of the handle
The handle can be easily connected to the pedal controller

Technical:

Maximum power:	150W
Power supply:	AC230V 50/60Hz
Motor speed:	300--4000rpm
Adjustable torque:	5Ncm--80Ncm
Water supply volume:	4 blocks adjustable, 150ml/min
Light source illumination:	30000lux
Motor:	surgical brushless motor
Volume(cm):	42x38x26cm
Weight(kg)/PCS	5.5kg
Packing material	Aluminum box
QTY per master carton	1 pc/ctn



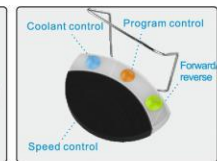
- Full touch big screen



Fiber optic contra angle



water injection pipe fixture



Full function pedal controller



- The first and only one Chinese brand which get license from Chinese government to make and sell implant machine
- Big Screen, clear and easy to understand
- 10 programs to save speed, torque and water
- Motor speed up to 5000RPM
- Cooling water up to 150ml/min
- Big foot pedal, stable, avoid mistake



This product has been applied layout-design patent, Counterfeit must be investigated:NO.ZL201230103509.0

Model: C-SAILOR

Dental implant system

Feature:

1-Reduction geared contra angle with internal and external irrigation

- Standard push button reduction geared (20:1) contra angle
- Available for standard reduction handpiece
- Autoclave repeatable

2- switzerland technology surgical brushless motor

- Speed is from 300 rpm to 50000 rpm. high torque and wide speed range for all kinds of treatment.
- Maximum torque is 210w/55N.cm. Powerful torque output can be efficient cutting bone.
- Unmatched stability, no overheating, silent

3-Foot control pedal

- Multi functional foot pedal, could achieve all the operating functions.
- Easy and flexible.

4-Intelligent cooling system

- Hand control and foot control
- Inner and external channel cooling and wash
- Quiet and strong water pump
- 5 speed adjustable water supply: 50-150ml/min

5-High Performance control system

- Big LED Screen, control easy
- 10 kinds of the reduction contra angle to choose
- 10 setting program, preset the speed of air motor, cool down the liquid amount and torque, reverse and specific speed.
- Achieve stepless speed regulation



Order name: **C-SAILOR**



Option:



Order Code: C6-19
C-Sailor

Order Code: C6-22
C-Sailor pro

Technical:

Maximum output power	120W
Power	AC110V/60HZ; AC230V/50HZ;
Adjustable torque, range	5.0-55N.cm(20:1)
BLDC Speed	300rpm-50000rpm
Infusion flow(maximum)	150ml/min
Motor	Surgical brushless motor
Volume(cm)	40X33X26.5
Weight(kg)/PCS	8.2
Packing material	Aluminum box
QTY per master carton	1 pc/ctn

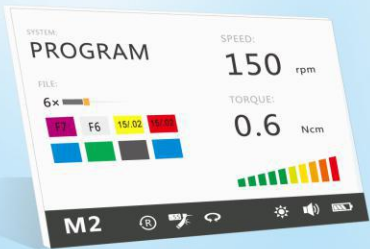
Contra angle for implant :

For implant:	C-Sailor	C-Sailor pro
Order Code:	C6-19	C6-21
20:1 Reduction:	√	√
For CA burs Ø2.35:	√	√
Speed:	Max.70N.cm	Max.70N.cm
Push button:	√	√
LED light:		Optic fiber
Inner and External spray:	√	√
135°C (Sterilization):	√	√

NEW

New technology
Big Screen, clear and easy to understand

Touch control, Systems inside
With LED light
With Apex locator function



- Including mainstream root canal expansion system like Dentsply® Wave one, VDW® Reciproc.
- Colorful screen, be clear at a glance
- Calibration function

- Auto power off and memory function
- Adjust alarm sound
- MINI push button head
- Programmed

- Adjust screen luminance
- Apex locator&endodontic treatment
- Apex locator

- Auto reverse function
- Reciprocation
- 16:1 reduction



Model: C-SMART-1

Endo motors

Feature:

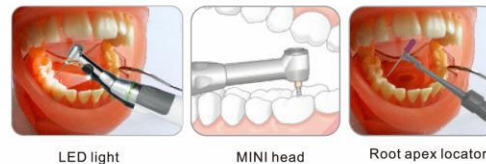
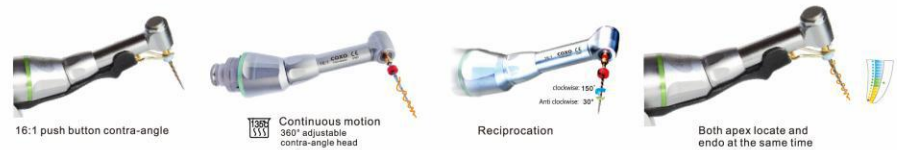
- 1- big size color LCD, rich information display
- 2- Touch button, simple and easy to use
- 3- Imported special motor, mute, big torque
- 4- Detachable handle LED lighting system, the operation vision is more clear
- 5-16:1 interchangeable push button contra angle
Fit into NSK Endo-mate
- 6-Effective precision motor drive and multi frequency root canal measurement technology can simultaneously achieve root canal measurement and preparation
- 7-Including mainstream root canal expansion system, like Dentsply® Wave one, VDW® Reciproc, no need to set up, just choose and use
- 8-High capacity rechargeable battery

Technical:

Adaptor working voltage	100-240Vac,50/60HZ;
Adjustable torque,range	0.6-5.2N.cm(6-52mN.m)
5 setting for adjustable rotational speed ranging:	150rpm-650rpm
Volume(cm)	23.5X20X14.5
Weight(kg)/PCS	2.8
Packing material	carton
QTY per master carton	6 pc/ctn

Order name: **C-SMART-1 PRO**

This product has been applied layout-design patent, Counterfeit must be investigated;NO.ZL201630278288.9



Model: C-SMART-1

Endo motors

Feature:

- 1- Detachable 1:1 mini contra angle, multi-angle
- 2-Folding color wide LCD screen
- 3-Original switzerland surgical brushless motor
- 4-Rotation speed and torque can be programmed to 9 settings
- 5-Dual-frequency apex locator
- 6-4 working modes
- 7-Auto apical reverse
- 8- Auto apical slow down
- 9- Reciprocating cutting mode
- 10-High capacity Li-Ion chargeable battery
- 11-Auto power off and memory function

Technical:

Adaptor working voltage	100-240Vac, 50/60HZ;
Adjustable torque, range	0.3-5.2N.cm(3-52mN.m)
5 setting for adjustable rotational speed ranging:	125rpm-650rpm
Volume(cm)	24X21X9.5
Weight(kg)/PCS	1.8
Packing material	carton
QTY per master carton	8 pc/ctn

This product has been applied layout-design patent, Counterfeit must be investigated; NO.ZL201230082365.5

4 working modes

	Mode:M1 Apex locator
	Mode:M2 Endodontic treatment
	Mode:M3 Reciprocating rotate head
	Mode:M4 Apex locator & endodontic treatment

Accessories



Top priority: patient safety, 4 different safety functions

Auto Start/Stop The file starts rotating automatically when inserted into the canal, and stops automatically upon withdrawal.	Auto Torque Reverse The file stops rotating automatically if the torque exceeds the specified limit of one of 11 torque levels.	Auto Apical Reverse When the file reaches at a specified measurement, the file rotation stops and reverses automatically.	Auto Apical Slow Down When the file is approaching to apical foramen, the motor automatically slows down for safer treatment.

Model: C-SMART-1

Endo motors

Feature:

- 1- Detachable 1:1 mini contra angle, multi-angle
- 2-Color wide LCD screen
- 3-Original switzerland electro-motor
- 4-Rotation speed and torque can be programmed to 9 settings
- 5-Dual-frequency apex locator
- 6-4 working modes
- 7-Auto apical reverse
- 8- Auto apical slow down
- 9- Reciprocating cutting mode
- 10-High capacity Li-Ion chargeable battery
- 11-Auto power off and memory function

Technical:

Adaptor working voltage	100-240Vac, 50/60HZ;
Adjustable torque, range	0.3-5.2N.cm(3-52mN.m)
5 setting for adjustable rotational speed ranging:	125rpm-650rpm
Volume(cm)	24X21X9.5
Weight(kg)/PCS	1.8
Packing material	carton
QTY per master carton	8 pc/ctn

This product has been applied layout-design patent, Counterfeit must be investigated; NO.ZL201230082365.5

4 working modes

	Mode:M1 Apex locator
	Mode:M2 Endodontic treatment
	Mode:M3 Reciprocating rotate head
	Mode:M4 Apex locator & endodontic treatment

Accessories



Top priority: patient safety, 4 different safety functions

Auto Start/Stop The file starts rotating automatically when inserted into the canal, and stops automatically upon withdrawal.	Auto Torque Reverse The file stops rotating automatically if the torque exceeds the specified limit of one of 11 torque levels.	Auto Apical Reverse When the file reaches at a specified measurement, the file rotation stops and reverses automatically.	Auto Apical Slow Down When the file is approaching to apical foramen, the motor automatically slows down for safer treatment.

Order name: C-SMART-V

Order name: C-SMART-I

Model: C-SMART

Endo motors

09
Endo motors



Feature:

1. Wireless handle, simple and convenient
2. LED lighting system, removable, high temperature sterilization
3. Automatic calibration mode
4. 1:1 push button contra angle, removable, high temperature sterilization
5. Five different operating procedures, applicable to all mainstream NITI systems
6. Automatic torque reversal mode and reverse alarm function
7. Easy operating with LCD screen
8. Reciprocating mode
9. 3 buttons, easy to operate
10. Non-contact charging technology to prevent liquid infiltration
11. Automatic shutdown kinetic energy, saving battery power

Technical:

Adaptor working voltage	100-240Vac, 50/60HZ;
Adjustable torque, range	0.6-3.9N.cm (6-39mN.m)
5 setting for adjustable rotational speed ranging:	125rpm-625rpm
Volume(cm)	19X13X6
Weight(kg)/PCS	0.7
Packing material	carton
QTY per master carton	12 pc/ctn

Order name: C-SMART mini LED



This product has been applied layout-design patent, Counterfeit must be investigated.



Model: C-SMART

Endo motors

10
Endo motors



Feature:

- 1- Slim for clearer sight
- 2- Keyboard operating, easy to use
- 3- Original switzerland surgical brushless motor
- 4- File rotates clockwise when torque disappears
- 5- Detachable 1:1 mini contra angle, multi-angle
- 6- Can be autoclaved sterilization
- 7- Rotation speed and torque can be programmed to 5 settings
- 8- Reciprocating cutting mode
- 9- Non-contact recharge design
- 10- Auto power off and memory function

Technical:

Adaptor working voltage	100-240Vac, 50/60HZ;
Adjustable torque, range	0.6-3.9N.cm (6-39mN.m)
5 setting for adjustable rotational speed ranging:	125rpm-650rpm
Volume(cm)	19X13X6
Weight(kg)/PCS	0.7
Packing material	carton
QTY per master carton	12 pc/ctn

Order name: C-SMART mini2



This product has been applied layout-design patent, Counterfeit must be investigated; NO.ZL201430485143.7

Feature:

- 1- Detachable 1:1 mini contra angle, multi-angle
- 2- Easy operating with wide LCD screen
- 3- Original switzerland electro-motor
- 4- Adjustable speed and torque
- 5- Auto reverse to protect the file
- 6- Reciprocating cutting mode
- 7- High capacity Li-Ion chargeable battery
- 8- Auto power off and memory function

Technical:

Adaptor working voltage	100-240Vac, 50/60HZ;
Adjustable torque, range	0.3-5.2N.cm (3-52mN.m)
5 setting for adjustable rotational speed ranging:	125rpm-650rpm
Volume(cm)	24X21X9.5
Weight(kg)/PCS	1.8
Packing material	carton
QTY per master carton	8 pc/ctn



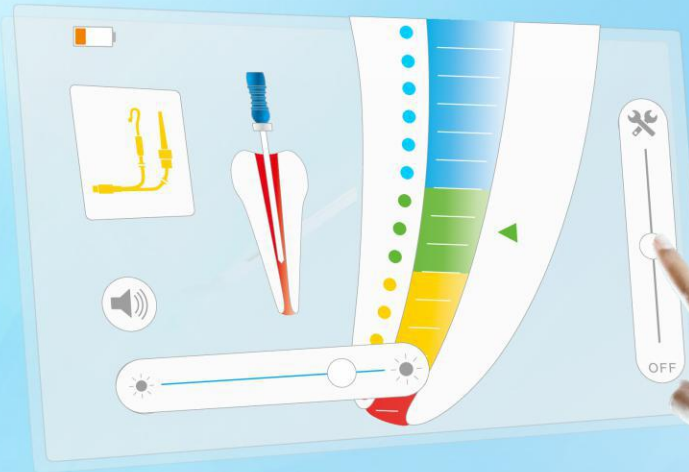
Order name: C-SMART



This product has been applied layout-design patent, Counterfeit must be investigated; NO.ZL200730333926.3



- Auto correction
- Touch screen
- Simple
- Friendly
- Multi-frequency
- New technology
- Exquisite
- accurate measurement
- Synchronous display
- 多角度调整



Touch precision
All touch TFT LCD

Model: C-ROOT I

Root Apex locators



Feature:

1. Simple and exquisite design
2. Multi-frequency technical, exact accurate
3. All touch TFT LCD
4. Simple operation interface, easy operation
5. Colorful screen, Be clear at a glance
6. Self calibration
7. Adjust screen luminance and alarm sound
8. Apex position can be adjusted
9. Test wire can be compatible with VDW® company RAYPEX6 machine

Technical:

Adaptor working voltage:	100-240Vac.50/60HZ;
Battery:	3.7V 1800mAh changeable Li-ion battery
Display:	color TFT-LCD touch screen size:73.44x48.96mm(3.5inch)
Display specifications:	resolution:480x320
Charge time:	3hours
Volume(cm):	16X14X6.5
Weight(kg)/PCS	0.7
Packing material	carton
QTY per master carton	12 pc/ctn

This product has been applied layout-design patent, Counterfeit must be investigated;NO.ZL201530423195.6

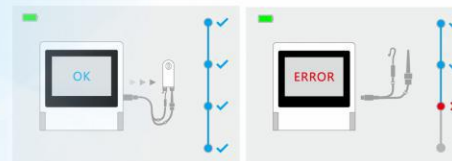
Order name: **C-ROOT I +**



Accessories



Automatic CHECK procedure: results either in ERROR or OK response



Model: C-ROOT I

Root Apex locators



Feature:

- 1-Root canal apex finder and pulp vital measurement;
- 2-Color LCD screen display and can adjust the angle you need;
- 3-Multi-frequency design, exact accurate;
- 4-Accurate current-stabilized generate technology
- 5-Self-test function in apex locator;
- 6-The narrow zone of the apex can be adjust if the doctor need;
- 7-Sound prompt for the apex in the narrow zone of the pulp vital;
- 8-Rechargeable Li-ion battery and charger

Two working modes



Order name: **C-ROOT I(VI)**
Root apex locator with pulp tester

13
Root apex locator

Model: C-PULSE

Pulp tester



Feature:

- 1-Preset speed mode(high-mid-low speed)
- 2-Agentle, pulsed stimulus begins to increase at a rate specifically designed for patient comfort.
- 3-If the patient indicates perception, simply release the button, the stimulus stops immediately, but the numbers remain frozen on the screen for about 3 minutes.
- 4-Specifically designed for patient comfort.
- 5-Convenient to operate.
- 6-Maximum stimulus--80, between 0-40, the patient feels ache and anesthesia, alive teeth nerve.
- 7-Between 40-80, with above-mentioned reaction, part of teeth nerve dead; 80, no above-mentioned reaction, dead teeth nerve.
- 8-The device turns itself off in three minutes after operation (No wasted batteries).

This product has been applied layout-design patent, Counterfeit must be investigated; NO.ZL200730333925.9

Order name: **C-PULSE**

14
Pulp tester

Model: C-HUNTER

Caries Detection Device



Order name: **C-ROOT I(III)**
Root apex locator

Feature:

- 1-Adopt the III dual-frequency measure technology, display with large LCD.
- 2-Measuring will not be effected by environment, no matter the root is dry or full of electrolyte(blood, or normal saline), It can measure precisely.
- 3-Manify the apex zone, display with 11 scales, precision can reach 0.1mm.
- 4-Number and scales display the detecting position synchronously.
- 5-With sonar alarm when it is in narrow zone, and the sonar volume can be regulated.
- 6-Auto-check when starts up, calibrate the data previously, remain the operation precision.
- 7-The narrow zone of apex can be regulated by the doctor if it's needed.
- 8-Long power consumption design, super long using time, power supplied by No.7 battery, with 7 scales battery indication.
- 9-The accessories can be sterilized with high temperature, prevent the patients from cross infection.

This product has been applied layout-design patent, Counterfeit must be investigated; NO.ZL200730333923.X



Simple, Effective,
Innovative caries detection
Competitive with the products of
KaVo and W&H



Order name: **C-HUNTER**

Feature:

- 1-Effective function for decayed tooth- detection , quickly, easily, painless
- 2-Wireless operation, Lightness using
- 3-Support minimally invasive surgery, safely, lighten patient's fear
- 4-Mini slender mainframe designing, provide the best treatment operation

Technical:

Adaptor working voltage:	100-240Vac,50/60HZ;
Lightwave Data:	LED intensities:40-280mw
Volume(cm):	16X14X6.5
Weight(kg)/PCS	0.5
Packing material	carton
QTY per master carton	6 pc/ctn

Function:

Bacteria in dentine infected by caries leave behind metabolic products(porphyrins), when an exposed cavity is illuminated with violet light, these porphyrins show a red fluorescence, thereby indicating the significant areas for caries excavation.

C-hunter aids detection and monitoring of carious tooth substance, in particular in dentin, during the excavation of previously opened cavities.

According to the particular fluorescence properties of the degradation product which is produced by the cariogenic bacteria, substances with teeth for removing infected, to remove the infected material on the teeth.

Accessories



Accessories



Technical:

	C-ROOT I(VI)	C-ROOT I(III)
Adaptor working voltage:	AC100-240V,50/60HZ;	voltage:DC7.5V
Battery:	7.4V/1000mAh changeable Li-ion battery	7 scales battery
Display:	color LCD	color LCD
Volume(cm):	24x19x9	20.5X18X10
Weight(kg)/PCS:	2.0	0.9
Packing material:	carton	carton
QTY per master carton:	6 pc/ctn	6 pc/ctn

SC-PRO2018

CONTROLLED MEMORY FILES

- High elasticity
- More Safety
- More Efficiency
- More Durable

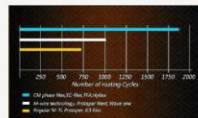


Use nickel titanium file to prevent detritus from introducing apical foramen
 Optimized to clear the file to the transition of the forming file
 Protection of curved root canal anatomy

leading operation concepts, advanced technical support to the leap of the SC-pro NITI file.



New Swiss hard treatment make good performance



Anti-cycle Fatigue Comparison

Model: SC-PRO 2018

Dental Root Canal Instruments



New series of SC-PRO 2018: only need to dredge up to Hand use file K10.



Feature:

1. Upgrade open file 17/12, more reasonable.
 2. With dual-variable taper of path file, nickel titanium file can be used after 10# hand file
 3. Upgrade shaping file 18/05, more perfect for the processing.
 4. Upgrade material, more flexible.
- Among classic 6 pcs system file, only it can used nickel titanium file after 10# hand file
 - SC Pro-2018 more suitable for the big taper of obturation filling system.

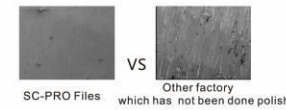
Technical:

Photo	Orifice Opener	12Variable taper Path file	16Variable taper Path file	18/.05	25/.06	35/.04
Model	#17	#12	#16	#18	#25	#35
Taper	12	02	02	05	06	04
Speed	300	350	350	350	350	350
Torque	3	1.5	1.5	2	2	1.5
Length	21mm/25mm/31mm					



High elasticity Super cutting force Chim triangle

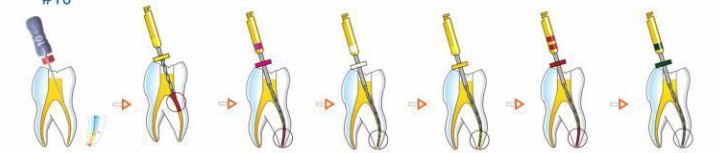
SC-PRO2018 on the basis of the SC-PRO added 06 taper file, Can face a variety of thickness of the root canal.



SC-PRO Files which has not been done polish

Super Easy Operation

Inspect #10 Orifice Opener Path file Shaping files Finishing files



Speed:300rpm Torque:3N.cm Speed:350rpm Torque:1.5N.cm Speed:350rpm Torque:1.5N.cm Speed:350rpm Torque:2N.cm Speed:350rpm Torque:2N.cm Speed:350rpm Torque:1.5N.cm



Continuous rotation

Model: SC-PRO lite 2018

Dental Root Canal Instruments



Safe
Simple
Practical



Feature:

- 1-SC-PRO simplified version is suitable for conventional root canal preparation.
- 2-Anti-cyclic fatigue increased to 400%.
- 3-Safe, simple, practical.
- 4-4 pens

Technical:

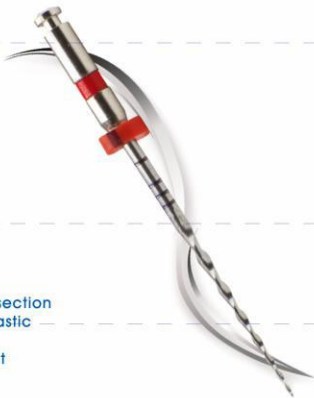
Photo				
Cross section	Orifice Opener	18 / 05	25 / 06	35 / 04
Model	#17	#18	#25	#35
Taper	12	05	06	04
Speed	300	350	350	350
Torque	3	2	2	1.5
Length	21mm/25mm/31mm			



Chimbi triangle

Model: SC-ONE 2018

Single files system



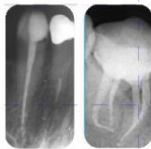
Sharp section
High elastic
Quick efficient

Feature:

- 1- Single file to complete the preparation
- 2- Unusually sharp section
- 3- The capacity of chip and chip evacuation enhanced
- 4- More flexible than the traditional single file, indications broader
- A- Good variable pitch design for quick and automatic removal of debris to the crown side.
- B- Variable pitch design and S-section, enhanced transverse cutting force, and weakened C- Instrument "screwed in" dentin effect.
- 5- Use 06 taper tooth glue tip filling.

Technical:

Photo			
	L1 20/07	L1 25/08	L1 35/06
Model	#20	#25	#35
Taper	07	06	06



simple complex

-Three different size finish file,
After predicting the root canal main sharp file,
-According to the fine root canal, middle root canal and rough root canal, Use a single file to complete the preparation



Model: SC-PRO

Dental Root Canal Instruments



Feature:

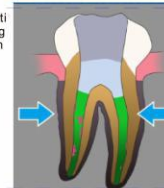
- 1-Super cutting force, anti-fatigue, anti-broken.
- 2-The new import CM NITI material, good flexibility,
- 3-More responsive to the root canal morphology.
- 4-The super-hard alloy coating, increase product durability, and make a perfect looking.

Technical:

Photo						
Model	Φ17	Φ19	Φ20	Φ25	Φ25	Φ35
Taper	08	02	04	06	06	04
Torque	3.0N.cm		1.5N.cm			
Length	21mm/25mm					

Cutting Efficiency Comparison

Traditional Niti File Cutting not enough



SC-PRO Files Cutting smoothly and equally

SC-PRO



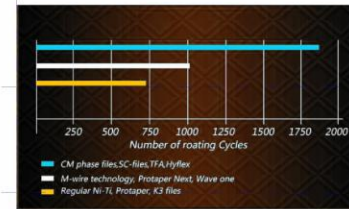
SC-PRO Niti Files

Smoothly and responsively Rotating in the canal

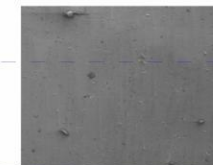


Traditional Niti File

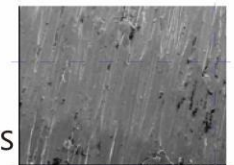
While Rotating, the file will go back to the center, it will easily harm to the canal and make ledge.



Anti-cycle Fatigue Comparison
New Swiss hard treatment make good per



SC-PRO Files



Other factory which has not been done polish



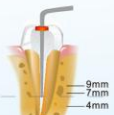
Option:



Gutta Percha Pellet
Order Code: C-Gutta



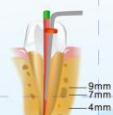
Down Pack



Insert pen tip into the root canal to the point 4-7mm short of the working length and fit Endo stop in the pen tip.



Fill the master Gutta percha cone that is dipped in a sealer



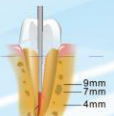
Place pen tip in the orifice of the canal and activate the device by pressing the operation button, using the activated pen tip, cut the middle of Gutta percha cone and down pack it to the point 6-9mm from the APEX about 1.5-2 seconds only.



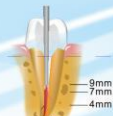
Release the operation button to allow pen tip to begin cooling, while at the same time continue pushing and holding the cooled pen tip to the apex for 8 seconds to fill the canal completely. Activate the pen tip again by pressing and holding the operation button for about 1-1.5 seconds, compact the gutta percha cone to the point 4-7mm of working length.



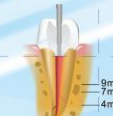
Back Fill



Using the gun's tip, make contact with the upper part of filled master cone in the canal, transfer heat for 3 to 5 seconds.



Flow the melted Gutta percha obturator to the root canal.



Continue flowing while with drawing the needle from the canal.



Now the entire root canal is fully obturated.

Model: C-FILL

Obturation system



C-FILL α pack

C-FILL β pack

Feature:

- C-FILL α pack**
- 1-Wireless design, Reduce wrist fatigue
 - 2-Holding comfortable, easy to use
 - 3-Heat plunger has easy-lock structure, and can rotate 360°
 - 4-Can be choose heating method according type of heat plunger.
 - 5-Fast heating, quick operation
 - 6-Large capacity battery, double battery charging and spare.

- C-FILL β pack**
- 1-Wireless handpiece, easy to use
 - 2-Holding and operating very comfortable
 - 3-Exactly temperature-control and thermal protector cap can be avoiding scald
 - 4-Gun needle can be 360 rotation, more easy to get the fill position
 - 5-Gun needle screw design, effectively prevent the glue;
 - 6-It can be at 200 degree in 30S, can be melting all kinds of gutta percha
 - 7-Large capacity for battery, which can use long time

This product has been applied layout-design patent, Counterfeit must be investigated; NO.ZL201430485143.7

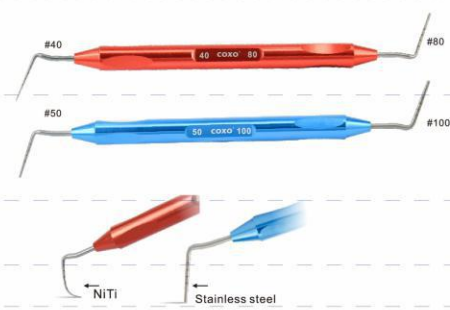
Technical:

Li-Ion chargeable Battery:	3.7v 2600mAh	3.7v 2200mAh
Heating time:	5s	30s to 200°C
Working temperature:	150°C, 180°C, 200°C, 230°C	150°C, 180°C, 200°C, 230°C
Adaptor Input:	100-240Vac	100-240Vac
Output:	DV5V, 1.5A	DV5V, 1.5A
Heat plunger:	F, FM, M, ML	23G, 25G
Operating time:	continuous for 1.5A	
Volume(cm)	20.5X18X10	
Weight(kg)/PCS	2.0	
Packing material	carton	
QTY per master carton	10 pc/ctn	

Order name: C-FILL

Needle			Heat plunger		
Gauge	Diameter	Length	Size	Color code	Taper/Size
23ga	0.65mm	23mm	#F	White	0.02 #45
23ga	0.65mm	23mm	#FM	Yellow	0.04 #50
25ga	0.55mm	23mm	#M	Red	0.06 #55
25ga	0.55mm	23mm	#ML	Red	0.08 #55

Vertical pressure device



Order name: CX265-59

- #40 NiTi
- #80 Stainless steel
- #50 NiTi
- #100 Stainless steel

Light and practical, They are used in conjunction with the obturation system

Model: C-BLADE

Gutta Cuts



Feature:

- 1-Double unit recharge is available
- 2-Delicate handle, and very comfortable
- 3-Single button operate, heat
- 4-Non-contact recharge design
- 5-Battery has large capacity, which is capable of 100 times use
- 6-4 different shape heat tip, can be sterilization under 135C, can be used for various kinds of root canal.

Order name: C-BLADE II



Feature:

- 1-press rapid heating, release the button a few seconds for cooling, easy to use.
- 2-Using wireless charging technology, stylish, fashionable.
- 3-2400mAh large capacity nickel cadmium rechargeable battery, avoid frequently charging trouble.
- 4-Fever needle can be sterilized, it can be repeatedly used.

This product has been applied layout-design patent, Counterfeit must be investigated; NO.ZL201430484927.3

Order name: C-BLADE

Technical:

	BLADE II	BLADE
Li-Ion chargeable Battery:	1.2v 2400mAh	
Heating time:	≥ 2s	
Working temperature:	160°C	
Charger input voltage:	AC230V 50HZ, AC110V 60HZ	
Heat plunger	F, FM, M, ML	
Volume(cm)	17.5X10.5X7.5	15X12X3.8
Weight(kg)/PCS	0.5	0.3
Packing material	carton	carton
QTY per master carton	10 pc/ctn	10 pc/ctn



135C SSS



Interproximal enamel kit



Feature:

- Rectilinear motion handpiece and carborundum blade:
- 1-Apply to invisible treatment; rapid repair of dental enamel
- 2-carborundum blade is stable and durable
- 3-The blade frame and the blade adopts the locking type design, its more solid, has a good compatibility with all kinds of handpiece
- 4-When the knife frame put in to handpiece, can be completely fixed, no shake
- 5-There are holes in the blade, which can effectively discharge the water and powder produced in the glaze.

Professional Efficient Precision

Order name: CB-11KIT

Technical:

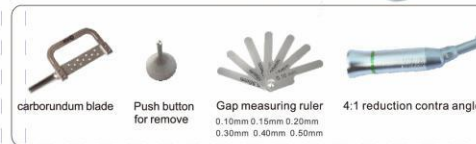
	15 μm	15HD	2 PCS
	25 μm	25HD	2 PCS
Two side diamond (with hole)	40 μm	40HD	2 PCS
	60 μm	60HD	2 PCS
	90 μm	90HD	2 PCS



up an down movement



10pcs



carborundum blade Push button for remove Gap measuring ruler 0.10mm 0.15mm 0.20mm 0.30mm 0.40mm 0.50mm 4:1 reduction contra angle



Different thickness for the diamond



Straight strip instrument

Order name: CX300



45° strip instrument

Order name: CX301

Minimally invasive repair, polishing and polishing.

Brushless LED



Option:



Order Code: C7-1 (1:5)



Order Code: C7-2 (1:5)



Order Code: C1-1 (1:1)



Order Code: C1-B (1:1)



Order Code: S-2B (1:1)

Model: C-PUMA

Dental electrical motors

Feature:

- 1-Simple operating system
Connect the dental unit to the C-Puma with a 4 holes tubing, use the foot pedal to control the electric motor.
- 2-The New-Gen of technology micromotor C-Puma
According to the different treatments and different handpieces, the speed can be adjusted from 100-200,000rpm/min.
- 3-Compact and handy, high torque
Ergonomic designed length and weight greatly reduce the fatigue from long time operation, the motor can be sterilized.

This product has been applied layout-design patent, Counterfeit must be investigated;NO.ZL201430485143.7



Brushless LED

order name: C-PUMA

可选择速度比啮机: 16:1,1:1,1:5

rpm	16:1	1:1	1:5
100	1,600		
1,000	16,000		
2,000		2,000	
2,500			
10,000		40,000	
40,000			80,000
200,000			200,000



Technical:

Power:	120w
Speed range:	2000rpm-4000rpm (1:1) 100rpm-2500rpm (16:1) 1000rpm-20000rpm (1:5)
LED maximum:	>25000lux
Torque output:	3.5N.CM
Volume(cm)	29X23X11
Weight(kg)/PCS	2.3
Packing material	carton
QTY per master carton	8 pc/ctn

Model: C-PUMA

Dental electrical motors

Feature:

- 1-brushless electrical motor,silence and free from maintenance
- 2-Inner channel spray
- 3-LED illumination
- 4-Motor can be sterilized.
- 6-Speed and direction are adjustable.
- 7-LED intensity and delay time are adjustable.



Brushless LED

order name: C-PUMA INT



Power source from dental unit: AC 24V 4A;
Available to be driven by Air or Electricity,
Intensity of the LED light is adjustable



Buttons for changing the direction and rotate speed

Technical:

Input:	AC24V
Maximun speed:	40,000rpm
Maximun torque:	3.5N.CM
Fit to ISO3964 contra angle and straight handpiece	
Volume(cm)	29X19X7
Weight(kg)/PCS	0.8
Packing material	carton
QTY per master carton	10 pc/ctn

Brushless LED

Dental electrical motors



Brushless LED

- Brushless micro electrical motor
- Led light
- Small and compact , with big torque
- With colorful screen ,clear for viewing
- Touch button , easy for operation.
- Built in type which fixed in the working tray, save space.
- Optional speed adjustment



Model: C-PUMA

Dental electrical motors



order name: C-PUMA INT+

Brushless LED

Feature:

- 1-Wide viewing angle color LCD screen;
- 2-Big size color LCD,rich information display
- 3-Touch key control, easy to use;
- 4-Built-in, control panel can be easily installed at any angle
- 5-Pneumatic / manual start automatically switch;
- 6-built-in 7 program memory;
- 7-Custom the air pressure of starting motor;
- 8-LED lighting delay off time is adjustable.
- 9-Speed, steering can be adjusted;
- 10-The motor can be autoclaved;

Technical:

Input power:	AC24V
Maximum speed:	40,000rpm
Maximum torque:	3.0N.cm
Fit to ISO3964 contra angle and straight handpiece	
3.0-inch LCD screen resolution:	240 * 400
Motor diameter:	20.6mm

Almighty Collocation Helps you easily solve all kinds of intraoral treatment or extraoral denture restoration, helping you to complete

more than 90% of the work



Big size color LCD

Touch key control

The suitable control devices



Built-in, easily installed at any angle

Option:



Order Code: C7-1
(1:5)

Order Code: C7-2
(1:5)

Order Code: C-1C
(1:1)

Order Code: C-1B
(1:1)

Order Code: S-2B
(1:1)

Model: DB-686

LED Curing lights



27 LED curing light

order name: **DB-686 HELEN+**

Blue: LED curing light
Red: Light activated disinfection

Feature:

- 1-Multi-function include LED curing light and light activated disinfection
- 2-Automatically identify the blue and red light
- 3-Non-contact recharge design, avoid the poor contact and prevent the liquid from reaching the contact
- 4-battery is detachable
- 5-light source is detachable and 360° rotation

Technical:

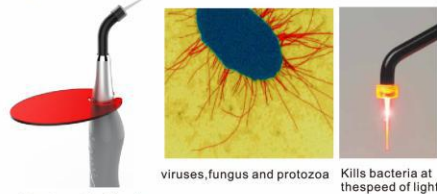
Charger working voltage:	AC100-240V,50/60Hz
Curing light:	wavelength:420-480nm Intensity:≥1200mW/cm² working time:5s,10s,20s
Light activated disinfection:	wavelength:635nm(±20) Intensity:2000-3000mW/cm² working time:60s,120s
Volume(cm)	20X14X8.2
Weight(kg)/PCS	0.8
Packing material	carton
QTY per master carton	12 pc/ctn

Function:

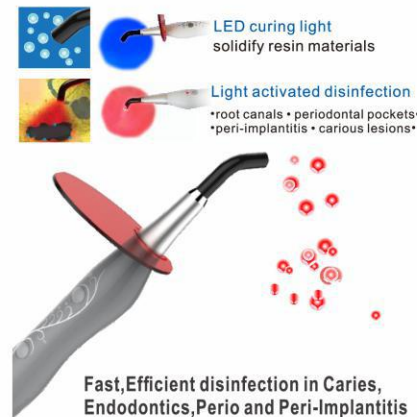
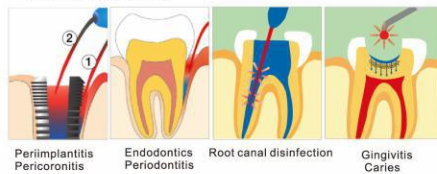
The DB686 HELEN+ system utilises Photo-Activated Disinfection to eliminate bacteria in the treatment of root canals, periodontal disease, peri-implantitis and caries by eliminating all species of oral bacteria on demand. DB686 HELEN+ represents a genuine advance in minimal invasive dental treatment. It provides consistent, fast, effective and simple disinfection, with no side effects.
DB686 HELEN+ purely dental blue light, solidify all brands of resin materials.

This product has been applied layout-design patent, Counterfeit must be investigated; NO.ZL201530045799.1

Light activated disinfection



Treatment indications:



Model: DB-686

LED Curing lights



28 LED curing light

order name: **DB-686 HELEN+Lite**

LED curing light

Feature:

- 1-High power LED, purely dental blue light.
- 2-High articulation optical fiber.
- 3-Digital display, Clear and intuitive operation.
- 4-Three working modes: strong, gradually strong, flashing.
- 5-Optional working time: 5sec, 10sec, 20sec, 40 sec.
- 6-Automatic inactive, automatic power off.
- 7-Low battery detection.
- 8-Removable large capacity Li-ion battery.
- 9-Soft pushbutton, nice feel.

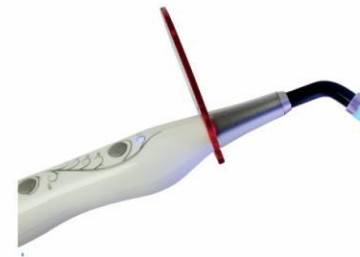
Technical:

Charger working voltage:	AC100-240V,50/60Hz
wavelength:	420-480nm
Light power:	≥1200mW/cm²
Solidification time and depth:	5s3mm
Volume(cm)	20X14X8.2
Weight(kg)/PCS	0.8
Packing material	carton
QTY per master carton	12 pc/ctn

Application:

Solidify all brands of resin materials.

This product has been applied layout-design patent, Counterfeit must be investigated; NO.ZL201530045799.1



Model: DB-685

LED Curing lights

Feature:

- 1-High power LED, professional dental spectrum.
- 2-Bionic design, LCD display.
- 3-Optional working mode: strong, low, gradually strong, flashing.
- 4-Solidifying time: 5-40s, can be adjustable.
- 5-Temperature inspect, over-temperature protection.
- 6-High capacity Li-ion battery, and can charge with charge base or adaptor.
- 7-Wireless and corded are compatible in one
- 8-Built-in high sensitive LED light measure system.
- 9-Handle can put on the tool tray with the holder.

Technical:

Charger working voltage:	AC100-240V,50/60Hz
wavelength:	420-480nm
Light power:	≥1200mW/cm ²
Solidification time and depth:	5s3mm
Volume(cm)	24X22.5X9.5
Weight(kg)/PCS	1.5
Packing material	carton
QTY per master carton	6 pc/ctn

Application:

Solidify all brands of resin materials.

This product has been applied layout-design patent, Counterfeit must be investigated; NO. ZL2010930080816.X



order name: **DB-685 PENGUIN**

29 LED curing light



Model: DB-686

LED Curing lights

Feature:

- 1-High power LED, purely dental blue light.
- 2-High articulation optical fiber.
- 3-Digital display, Clear and intuitive operation.
- 4-Three working modes: strong, gradually strong, flashing.
- 5-Optional working time: 5sec, 10sec, 15sec, 20sec.
- 6-Automatic inactive, automatic power off.
- 7-Low battery detection.
- 8-Removable large capacity Li-ion battery.
- 9-Soft pushbutton, nice feel.

Technical:

Charger working voltage:	AC100-240V,50/60Hz
wavelength:	420-480nm
Light power:	≥1200mW/cm ²
Solidification time and depth:	5s3mm
Volume(cm)	23X13X5.5
Weight(kg)/PCS	0.6
Packing material	carton
QTY per master carton	10 pc/ctn

Application:

Solidify all brands of resin materials.



- Purple
- Green
- Blue
- Black



order name: **DB-686 DELI**

30 LED curing light



order name: **DB-686 LATTE**

This product has been applied layout-design patent. Counterfeit must be investigated.

Feature:

- 1-High power LED, purely dental blue light
- 2-Digital display, adjustable work time
- 3-High capacity rechargeable Li-ion battery, low battery detection
- 4-Low-power, long standby time
- 5-Over-temperature protection, light source detection

This product has been applied layout-design patent, Counterfeit must be investigated; NO. ZL200830107969.4

Technical:

Charger working voltage:	AC100-240V,50/60Hz
wavelength:	420-480nm
Light power:	≥1200mW/cm ²
Solidification time and depth:	5s3mm
Volume(cm)	24X19X9
Weight(kg)/PCS	0.6
Packing material	carton
QTY per master carton	10 pc/ctn

Application:

Solidify all brands of resin materials.

Model: DB-685

LED Curing lights



Feature:

- 1-Dental special high power LED
- 2-Optional light intensity:strong,medium,low
- 3-Optional working mode:fixed,gradually strong,flashing
- 4-Time : 5 seconds to 30 minutes.
- 5-high-capacity lithium-ion battery, battery check function

This product has been applied layout-design patent, Counterfeit must be investigated;NO.ZL201220344676.9

Technical:

Charger working voltage:	AC100-240V,50/60Hz
wavelength:.	420-480nm
Light power:	≥1200mW/cm²
Solidification time and depth:	5s3mm
Volume(cm)	24X19X9
Weight(kg)/PCS	1.0
Packing material	carton
QTY per master carton	6 pc/ctn

Application:

Solidify all brands of resin materials.

order name:**DB-685 SUPER-LUX**

31 LED curing light

Model: DB-686

LED Curing lights



Feature:

- 1-Dental special high power LED
- 2-High articulation optical fiber
- 3-Three working modes:strong,gradually strong,flashing
- 4-Optional working time:10sec,15sec,20sec
- 5-Automatic inactive,automatic power off
- 6-Low battery alert
- 7-Super capacity battery
- 8-Membrane pushbutton,soff feel

This product has been applied layout-design patent, Counterfeit must be investigated;NO.ZL201073052828.2

Application:

Solidify all brands of resin materials.

Technical:

Charger working voltage:	AC100-240V,50/60Hz
wavelength:.	420-480nm
Light power:	≥1200mW/cm²
Solidification time and depth:	5s3mm
Volume(cm)	23X13X5.5
Weight(kg)/PCS	0.6
Packing material	carton
QTY per master carton	10 pc/ctn

order name:**DB-686-1b**

32 LED curing light

Feature:

- 1-high power LED, dentistry dedicated spectrum
- 2-streamlined design, LCD display and
- 3-both the light-curing treatment and teeth whitening
- 4-3 light intensity profiles are available: light, medium, low
- 5-3 operating modes: bright, fade, blink
- 6-time: 5 seconds to 30 seconds to select
- 7-high-capacity lithium-ion battery, battery check function
- 8-built-in high sensitive LED metering system

Technical:

Charger working voltage:	AC100-240V,50/60Hz
wavelength:.	420-480nm
Light power:	≥1200mW/cm²
Solidification time and depth:	5s3mm
Volume(cm)	24X19X9
Weight(kg)/PCS	1.0
Packing material	carton
QTY per master carton	6 pc/ctn

Application:

Solidify all brands of resin materials.

order name:**DB-685 SUPER DUAL**



order name:**DB-128**
Light meter

optical fiber



order name: CX233-3 for 686/DB-686-1	order name: CX233-4 for 686/686-1 (WHITE)	order name: CX233-6 for 686 LATTE/CAPPU	order name: CX233-7 for 686 SUPER LUX/ SUPER DUAL
---	---	--	---



order name: CX233-8 for 685 PENGUIN/ 686 DELI	order name: CX233-9 for 686 HELEN	order name: CX233-10 for hunter(90°)	order name: CX233-11 for hunter(120°)
---	--	---	--

Model: C-BRIGHT

Teeth whitening acceleratos



Feature:

- 1-new-style structure and unique form, compact and elegance
- 2-Double handles, drug type arm,multi-angle adjustment to make the operate more flexibly
- 3-Unique semi-circular head design, both arches whitened at the same time
- 4-6pcs high power LED, fan-cooled
- 5-10s and 30s as a curing ligh, 1-30minutes as a whitening accelerator
- 6-6 light intensities,suitable for more brands tooth whitening gel
- 7-LCD module screen shows all the information, all the operation is so easy
- 8-Chairside type is available

Technical:

Input power:	AC100-240V,50/60Hz	
Light resource:	6pcs high power LED	
Wavelength:	420nm-490nm	
Light intensity:	6 intensities,maximum>6000mW/cm ²	
Adjustable timer:	10s,30s,1m,2m,5m,8m,10m,15m,20m,30m	
	C-bright	C-bright-b
Volume(cm)	base:63x63x23, arm:100x26x27	base:22x18x3 arm:52x52x22
Weight(kg)/PCS	20.0kg	0.13kg 6.0kg
Packing material	carton	

This product has been applied layout-design patent. Counterfeit must be investigated. ZL201030178145.3 ZL201220344678.9



order name:C-BRIGHT



order name:C-BRIGHT-B



Treatment kits

order name:DR.whiten

Model: C-BRIGHT

Teeth whitening accelerators



Feature:

- 1-simple,light and handy moldin design.
- 2-Hand-held and fixed dual-use two design, freely to adjust to any angle position
- 3-Unique aemi-cicular head design,both arches whitened at the same time.
- 4-6 pcs high power LED, fan-cooled.
- 5-1-0 minutes adjustable timer,3 light intensities,suitabl for more brands tooth whitening gel
- 6-Led screen shows all the information,all the operation is so easy
- 7-Integrated type is available

This product has been applied layout-design patent, Counterfeit must be investigated;NO.ZL201030178149.1

Technical:

Input power:	AC100-240V,50/60Hz	
Light resource:	6pcs high power LED	
Wavelength:	420nm-490nm	
Light intensity:	3 intensities,maximum>6000mW/cm ²	
Adjustable timer:	1m,5m,8m,10m,15m,30m	
	C-bright-1a	C-bright-1b
Volume(cm)	base:54x54x24, arm:100x14x12	52x52x22
Weight(kg)/PCS	9.0kg	5.5kg
Packing material	carton	

order name:C-BRIGHT-1a



order name:C-BRIGHT-1



order name:C-BRIGHT-1b



Before

After



Model: DB-988

Dental alginate mixer



Feature:

- 1-Streamline modelling, perfect design, smart construction
- 2-electric lock and motor brake gear ensure operational security
- 3-High-power and high-speed motor, fine viscosity and perfect mixture
- 4-Easy to operation, harmonious, no bubbles
- 5-3 programs setting for memory the mixing time (Install setting: 6, 8, 10 seconds)

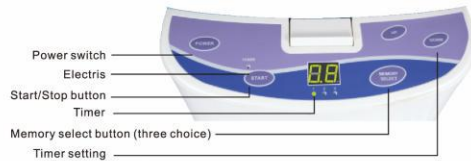
Technical:

Voltage:	AC110V 50/60HZ; AC220V 50/60HZ
Consumer power:	350-400W
Wavelength:	420nm-490nm
Timer:	1-16seconds
Revolution:	2900-3600 R.P.M.
Volume(cm)	40x33x45
Weight(kg)/PCS	26.0kg
Packing material	wooden

35
Alginate mixer Accelerator



order name: **DB-988**



- Power switch
- Electris
- Start/Stop button
- Timer
- Memory select button (three choice)
- Timer setting



1. Accelerator built on mixing bowl cap



2. Measure the correct amount of alginate & water for use



3. Close tightly the cap of mixing bowl



4. Place it into the well of Alginate mixer



5. Press down the key "ST/STOP" to start running



6. Take out the mixture by the spatula



DB-988 Made



Hand Made

Model: DB-338

Amalgamators



order name: **DB-338**



Feature:

- 1-This kind of amalgamator, controlled by a microprocessor, ensures a precise, controlled, consistent mix.
- 2-With the width of the oscillating range, the mixing frequency, and your selected time(1-99S).
- 3-It's revolve according to "8" model.
- 4-For mercury-based fillings, trust the performance of DB338 amalgamator. Together, it provides the clinical perfection you need with the ease-of-use you want.
- 5-For safe operation, the DB338 deactivates when you open the front cover to access the capsule.
- 6-Its ergonomic design is easy to use, stable, extremely quiet and easy to clean and maintain

Technical:

Voltage:	220 V / 50 Hz(110 V / 60 Hz are available)
Absorbed power:	200W Fuse 2A
Mixing frequency:	4500tr/mn(rpm)
Noise:	65dB
Programmable mixing time:	1-99sec.
Volume(cm)	33x27x20
Weight(kg)/PCS	4.5kg
Packing material	carton

36
Teeth whitening accelerator

Model: DB-4860

Ultrasonic cleaners



order name: **DB-4860**

Technical:

Tank capacity	6000ML (1.6 gallon US)	Max:5000ml(1.3gallon (US)) Min:3350ml / 0.9gallon(US)
Tank Size	33.1X23.8 X10.5CM/13.0"X9.4"X4.1"	
Longest Item Fits Inside Tank	34.0CM/13.4"	
Power	290 W (AC100-120V 60Hz) 310W (AC220-240V 50Hz) 270W (AC100V 50/60Hz)	
Digital timer	1 to 30-minute full range timer	
Drainage	Drainage valve	
Ultrasonic Frequency	35,000Hz	
Tank Weight	Stainless steel SU 304	
Net Weight	9.3kg/20.7lb	
Gross Weight	10.9kg/24.2lb	
Inner Box Size	50.5x36.0x25.0cm/17.2"x11.8"x 9.8"	
Master Carton Size	52.0x37.5x66.0cm/20.0"x14.8"x26.0"	

Model: DB-4820

Ultrasonic cleaners



order name: **DB-4820**

Technical:

Ultrasonic Frequency	42,000 Hz
Tank Material	Stainless Steel SUS304
Tank Capacity	2500 ml Digital timer with 5 cycles
Timer	(180/280/380/480/90 seconds)
Power Supply	AC 100 ~ 120V, 50 / 60Hz AC 220 ~ 240V, 50 / 60 Hz
Power	160 W(AC110V-120V);170W(AC220V-240V)
Unit Size	35X26X23 cm (L x W x H)
Unit N.W.	3KG

Sander gun



order name: **DB-828-3**



order name: **DB-828**



order name: **DB-828-2**

Combi-suction unit



one for one

order name: **DB-V102**

Voltage (V) :220-240
Frequency (Hz) :50/60
Current (A) :3.5 / 4.5
Vacuum degree (mPa) :-130 / -140
Noise (dB) :58
Operator Number :1
Chair spaces :1-2
Weight (kg) :25
Volume (mm) :280x350x580



one for two

order name: **DB-V103**

Voltage (V) :220-240
Frequency (Hz) :50/60
Current (A) :4.5 / 5.6
Vacuum degree (mPa) :-150 / -160
Noise (dB) :562
Operator Number :2
Chair spaces :2-3
Weight (kg) :29
Volume (mm) :310x400x600



one for three

order name: **DB-V105**

Voltage (V) :220-240
Frequency (Hz) :50/60
Current (A) :7.3 / 8.3
Vacuum degree (mPa) :-160 / -180
Noise (dB) :565
Operator Number :3
Chair spaces :3-4
Weight (kg) :32
Volume (mm) :310x400x630

Protoble dental unit



order name: **DB-408**

Protoble dental unit

Technical data
Electric power :220V/50HZ
Capacity:350W
Air flow rate:36L/Min
Min pressure:0.4Mpa±0.05
Max pressure:0.8Mpa±0.05
Working pressure:0.3Mpa±0.05
Noise:25-30dB
Net weight:15KG
Gross weight:17KG
Package size : 485mm*410mm*490mm

Standard set
Air compressor:1 set
Two hole/four hole handpiece tube:1pcs/2pcs
Round pedal button :1 set
Triple-use gun: 1 set
600ml water reserved bottle:1pcs
Hand cart :1 set
Air reservoir :1pcs

one for two



Dental mobile cart



order name: **DB-838-9**

Dental mobile cart(Electric hoist)

Feature:
1. Electric hoist adjustable height 760cm to 960cm
2. removable shipment
3. mobile and convenient
4. High-quality materials and imaginative



for standing



order name: **DB-838-10**

Dental mobile cart

Standard configurations:
1. Handpiece tube with a holes 3 sets
2. 3-way gun 1 set
3. water storage bottle 1 set
4. luxurious pedal 1 set
5. Air inlet water inlet
6. Note: Packing size: 640x640x640
Product size: 520x520x (760-960)

optional configurations
1. Weak absorption
2. 2 holes
3. Curing light
4. High speed handpiece
5. Low speed handpiece

**ACCESSORY OF
Electric Equipment**



Order code: C1-17M
1:1 mini push button contral angle head



Order code: C1-19M
1:1 mini push button contral angle head



Order code: C4-19M
16:1 mini push button contral angle head

Fit into NSK[®]
endo-mate[®]



Order code: CX265-56
Disinfection box



Order code: CX265-57
File rack with measuring ruler



Order code: CX265-23
File rack with measuring ruler



Order code: CX265-24
Measuring ruler



Order code: CX265-25
Cleaning table-board



Order code: CX265-33
Root canal plastic module



Order code: CX265-58
Gutta percha trimmer



Order code: C-Gutta
Gutta percha pellet



Order code: CX265-34
Gutta percha



Order code: CX265-35
Gutta percha



Order code: CX265-36
Gutta percha



Order code: CX265-37
Gutta percha



Order code: CX265-5
Plunger



Order code: CX265-1
Heat plunger



Order code: CX265-2
Gun needle



Order code: CX265-31
Heat tip



Order code: CX265-55
For C-smart mini LED



Order code: CX265-53
For C-smart-1 pro



Order code: CX265-8
For C-Smart-1+
Contra angle holder



Order code: CX265-4
Multi-tool

ACCESSORY OF ELECTRIC EQUIPMENT



Order code: CX265-16
Test wire



Order code: CX265-19
For C-Root i+
Test wire



Order code: CX265-9
For C-Smart-1
lip hook line



Order code: CX265-52
For C-Smart-1^{pro}
C-Root i+
File holder



Order code: CX265-18
For C-Smart-1
C-Root(VI)
File holder



Order code: CX265-17
lip hook



Order code: CX265-21
For C-Root(VI)
Tooth probes



Order code: CX265-3
Thermal protector cap



Order code: CX265-7
For C-Smart-1
motor handle



Order code: CX265-15
For C-Smart series
Foot control



Order code: CX265-22
For C-Root(VI)
Test handle



Order code: CX265-40
for C-sailor
motor with wire



Order code: CX265-38
for C-sailor
water supply pipe



Order code: CX265-41
for C-sailor
Foot control



Order code: CX265-42
for C-puma
Micro motor



Order code: CX265-45
For DB-686 DELI
Battery



Order code: CX265-46
For DB-686 latte
Battery



Order code: CX265-47
For DB-686 Helen+
Battery



Order code: CX265-48
For DB-685
penguin
Battery



Order code: CX265-49
For DB-685
super dual
Battery



Order code: CX265-50
For DB-686-1b
Battery



Order code: CX265-51
Eye protection unit



Order code: CX265-10
For C-Smart-1/C-Smart
Battery



Order code: CX265-20
For C-Root(VI)
Battery



Order code: CX265-54
Adapter
(DC10V,1.5A)
For C-smart-1 pro



Order code: CX265-43
for C-puma
Adapter
(DC 30V,4A)



Order code: CX265-27
Adapter
(DC10V,1.5A)



Order code: CX265-28
Adapter
(DC10V,1.5A)



Order code: CX265-29
Adapter
(DC5V,1.0A)
For C-Root i+



Order code: CX265-30
Adapter
(DC5V,0.5A)

Handpiece Producing Facilities

COXO possesses a modern professional dental turbine workshop, including precision processing center, high and low speed turbine processing, assembling and testing workshops and a comprehensive testing workshop as well. All the workshops are equipped with advanced testing and process facilities.



Balance machine from Germany



We can supply many kinds of handpiece with high quality and better price.

COXO Brand dental turbine has got the approval of European Union CE certification, and the China national product registration as well.



Handpiece Series
Professional Dental Handpiece Manufacturer



LED HANDPIECE WITH GENERATOR

Model: CX207-F

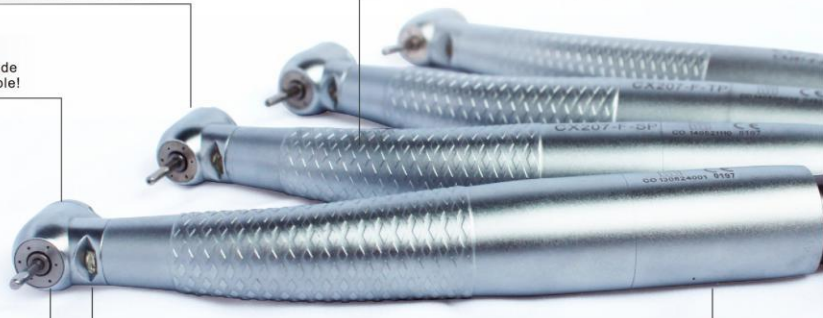


Self-luminous

Myonic bearing
Cartidge passed the Germany dynamic balance machine test

Graceful body, simple, portable
easy clean, easy control

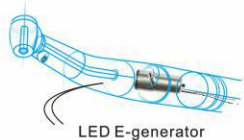
Reject welding,
complete head made
by CNC, more stable!



3 way spray, 3 air
Head and cartridge with
anti-retraction structure

Professional LED light source,
superior brightness, Longevity
10000 hours.

Unique electric generator,
just a little air can generate
sufficient power;



LED E-generator



anti-dust structure

This product has been applied layout-design patent, counterfeit must be investigated.
NO.ZL201220717131.8 ZL201210563855.6

Technical:

High speed handpiece:	3 way spray 3 air
Chuck type:	push button
Bulb:	LED light
Noise:	≤70dB
Air pressure at the back end of HP:	0.25-0.27MPA(4hole) 0.20-0.22MPA(2hole)
Bur applicable:	Ø1.59-Ø1.6mmx21-23mm
Rotation speed:	≥300,000rpm

Model: CX207-F

High-speed air turbine handpieces



Order code: 210-F+-SP



Standard head

Order code: H15-SP4
H15-SP2



Order code: 210-F+-TP



Torque head

Order code: H15-TP4
H15-TP2



Order code: 210-F-MP



Miniature head Quick coupling

Complete order code: H05-MPQ
Handpiece order code: H05-MPQ4
H05-MPQ2



Order code: 210-F+-SP



Standard head Quick coupling

Complete order code: H15-SPQ
Handpiece order code: H15-SPQ4
H15-SPQ2



Order code: 210-F+-TP



Torque head Quick coupling

Complete order code: H15-TPQ
Handpiece order code: H15-TPQ4
H15-TPQ2



Order code: 210-FD-SP



Standard head 45°

Order code: H05-DSP4
H05-DSP2

OPTICAL HANDPIECE

Optical fiber illumination

Model: CX207-G



Fiber Optic

Reject welding, complete head made by CNC, more stable!

Myonic bearing
Cartridge passed the Germany dynamic balance machine test

3 way spray, 3 air clean head system
Head and cartridge with anti-dust structure

Optical fiber illumination

Graceful body, simple, portable
easy clean, easy control

Technical:

High speed handpiece: 3 way spray 3 air
 Chuck type: push button
 Bulb: LED light
 Noise: ≤70dB
 Air pressure: 0.25-0.27MPa(6hole)
 Bur splicable: Ø1.59-Ø1.6mmx21-23mm
 Rotation speed: ≥300,000rpm
 Bulb power: 1w
 Work voltage: 2.9v-3.2v
 Work current: 160mA



Order code: **229-GN**
(Fit into **NSK**
Machilite/Phatelus)



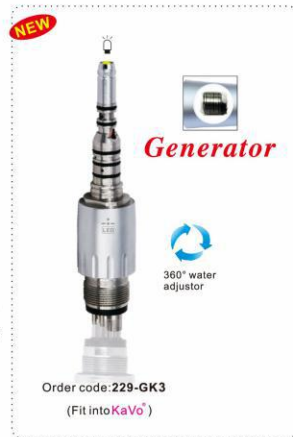
Order code: **229-GW**
(Fit into **W&H**
Roto Quick*)



Order code: **229-GS**
(Fit into **Sirona** R/F)



Order code: **229-GK**
(Fit into **KaVo**
MULTIfelX'LUX)



Order code: **229-GK3**
(Fit into **KaVo**)

45 Optical handpiece

Model: CX207-G

High-speed air turbine handpieces



Standard head Handpiece Order code: **H16-NSPQ**
Complete order code: **H16-NSPQ6**

(Fit into **NSK**
Machilite/Phatelus)



Standard head Handpiece Order code: **H16-WSPQ**
Complete order code: **H16-WSPQ6**

(Fit into **W&H**
Roto Quick*)



Standard head Handpiece Order code: **H16-SSPQ**
Complete order code: **H16-SSPQ6**

(Fit into **Sirona** R/F)



Standard head Handpiece Order code: **H16-KSPQ**
Complete order code: **H16-KSPQ6**

(Fit into **KaVo**
MULTIfelX'LUX)



Order code: **210-G+-SP**
For standard head



Order code: **210-G+-TP**
For torque head

46 Optical handpiece

OPTICAL HANDPIECE
Optical fiber illumination

Model: CX207-G

High-speed air turbine handpieces



Optical fiber illumination

Reject welding, complete head made by CNC, more stable!

Myonic bearing
Cartridge passed the Germany dynamic balance machine test

LED light fit into KaVo® MULTiflex® LUX



360° water adjuster

Order code: 229-GK1
fit into KaVo® MULTiflex® LUX



47 Optical handpiece



Order code: 210-G+-SP



Standard head Complete order code: H16-K1SPQ6

(Fit into KaVo® MULTiflex® LUX)



Order code: 210-G+-TP



Torque head Complete order code: H16-K1TPQ6

(Fit into KaVo® MULTiflex® LUX)



Order code: 210-GKD-SP



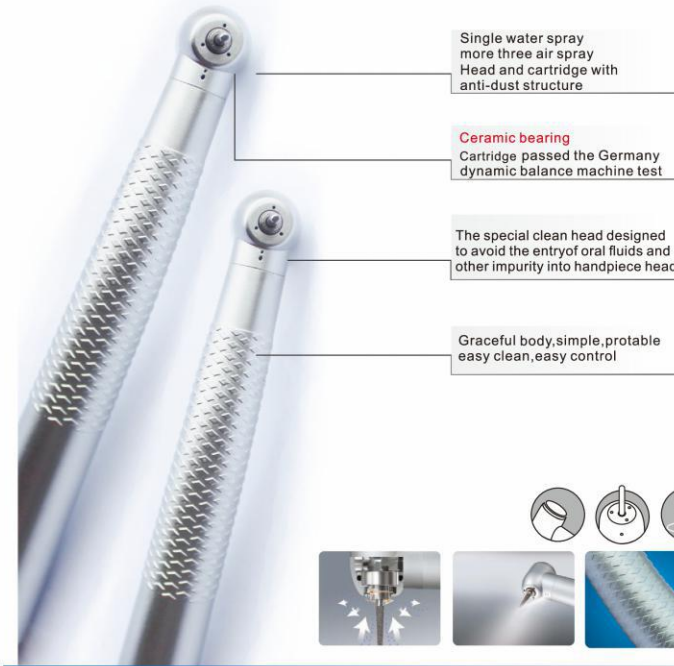
Standard head 45° Handpiece Order code: H06-KD1SPQ
Complete order code: H06-KD1SPQ6

(Fit into KaVo® MULTiflex® LUX)

CLEAN HEAD SYSTEM HANDPIECE

Model: CX207-A

High-speed air turbine handpieces



Single water spray more three air spray
Head and cartridge with anti-dust structure

Ceramic bearing
Cartridge passed the Germany dynamic balance machine test

The special clean head designed to avoid the entry of oral fluids and other impurity into handpiece head.

Graceful body, simple, portable
easy clean, easy control



48 Clean head system handpiece



Order code: 210-A-SP



Standard head Order code: H02-SP4
H02-SP2



Order code: 210-A-TP



Torque head Order code: H02-TP4
H02-TP2

**3 WAY SPRAY
HANDPIECE**

Model: CX207-W



Cartridge passed the Germany dynamic balance machine test

3 water spray, 3 air spray
Head and cartridge with anti-dust structure

Good cooling system,
soft push button

Wear-resisting, efficient operation

Graceful body, simple,
easy clean, easy control



Technical:

High speed handpiece:	3 way spray, 3 air spray
Chuck type:	push button
Noise:	≤68dB
Air pressure at the back end of HP:	0.25-0.27MPA(4hole) 0.20-0.22MPA(2hole)
Bur applicable:	∅1.59-∅1.6mmx21-23mm
Rotation speed:	≥300,000rpm

Model: CX207-W

High-speed air turbine handpieces



Order code: 210-W+SP



Standard head Order code: H17-SP4
H17-SP2



Order code: 210-W+TP



Torque head Order code: H17-TP4
H17-TP2



Order code: 210-W+SP



Standard head Quick coupling Order code: H17-SPQ4
H17-SPQ2



Order code: 210-W+TP



Torque head Quick coupling Order code: H17-TPQ4
H17-TPQ2

SPECIAL POWERFUL TURBINES

Model: CX207-B

HANDPIECE

SPECIAL Powerful torque NEW

ATLAS

Myonic bearing

Cartridge passed the Germany dynamic balance machine test
Low noise, long life

Dustproof system

Prevent dust into the head, increase in the life of bearings.

Integral head

a complete part made by CNC machining, more stable than the welding head, more precise

Overpressure control valve

The air pressure regulator inside the handpiece can ensure that the working pressure of the handpiece does not exceed 0.33mpa, to prevent the impeller rotate too fast to damage the bearing, thus extending the life of the handpiece.

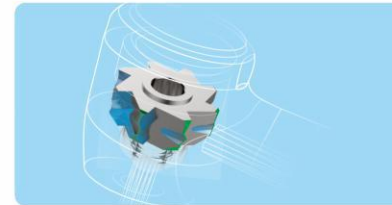


Technical:

High speed handpiece:	1 way spray, 4 air spray
Chuck type:	push button
Noise	≤60dB
Air pressure at the back end of HP:	0.25-0.27MPA(4hole) 0.20-0.22MPA(2hole)
Bur spplicable:	Ø1.59-Ø1.6mmx21-23mm
Rotation speed:	≥ 300,000-370,000rpm
Power:	24W

Model: CX207-B

High-speed air turbine handpieces



Special powerful rotor provides the most powerful power for you
Specially optimized impeller and intake and return air holes can achieve higher rotor efficiency. Maximum torque and optimum power are obtained throughout the process. Power up to 24w.

ATLAS



Order code: 210-23-SP



Standard head

Order code: H23-SP4
H23-SP2



Order code: 210-23-TP



Torque head

Order code: H23-TP4
H23-TP2

**1 WAY SPRAY
HANDPIECE**

Model: CX207-B

1 water spray, 4 air spray
Head and cartridge with
anti-dust structure

Reject welding,
complete head made by CNC,
more stable!

Graceful body, simple,
easy clean, easy control

Wear-resisting, efficient operation



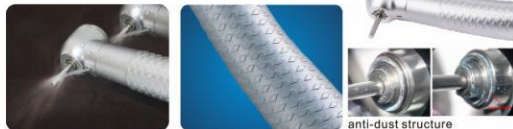
Myonic bearing
Cartridge passed the Germany
dynamic balance machine test

Good cooling system,
soft push button



Technical:

High speed handpiece:	1 way spray, 4 air spray
Chuck type:	push button
Noise:	≤68dB
Air pressure at the back end of HP:	0.25-0.27MPa(4hole) 0.20-0.22MPa(2hole)
Bur applicable:	∅1.59-∅1.6mmx21-23mm
Rotation speed:	≥300,000rpm



anti-dust structure

Model: CX207-B

High-speed air turbine handpieces



Order code: 210-B+S



Order code: 210-B+T



Order code: 210-B-MP



Order code: 210-B+SP



Order code: 210-B+TP



Standard head Order code: H13-S4
H13-S2



Torque head Order code: H13-T4
H13-T2



Miniature head Order code: H03-MP4
H03-MP2



Standard head Order code: H13-SP4
H13-SP2



Torque head Order code: H13-TP4
H13-TP2

COLOR HANDPIECE Model: CX207-C



Ceramic bearing
Cartridge passed the Germany dynamic balance machine test

Wear-resisting, efficient operation

Good cooling system, soft push button

Aluminum alloys body, light, colorful, easy clean, easy control



Technical:

High speed handpiece: 1 way spray 3air spray
 Chuck type: push button
 Noise: ≤68dB
 Air pressure at the back end of HP: 0.25-0.27MPA(4hole)
 0.20-0.22MPA(2hole)
 Bur spplicable: Ø1.59-Ø1.6mmx21-23mm
 Rotation speed: ≥300,000rpm
 color: red yellow purple blue black

Model: CX207-C

High-speed air turbine handpieces



Standard head Order code: **H14-1SP4**
 Red H14-1SP2



Torque head Order code: **H14-1TP4**
 Red H14-1TP2



Standard head Order code: **H14-2SP4**
 Yellow H14-2SP2



Torque head Order code: **H14-2TP4**
 Yellow H14-2TP2



Standard head Order code: **H14-3SP4**
 Purple H14-3SP2



Torque head Order code: **H14-3TP4**
 Purple H14-3TP2



Standard head Order code: **H14-4SP4**
 Blue H14-4SP2



Torque head Order code: **H14-4TP4**
 Blue H14-4TP2



Standard head Order code: **H14-5SP4**
 Black H14-5SP2



Torque head Order code: **H14-5TP4**
 Black H14-5TP2



Order code: **210-C+SP**
 For standard head



Order code: **210-C+TP**
 For torque head

NATURE HANDPIECE Model: CX207



Push button or wrench choose



Technical:

High speed handpiece:	1 way spray
Chuck type:	push button/latch
Noise:	≤68dB
Air pressure at the back end of HP:	0.25-0.27MPA(4hole) 0.20-0.22MPA(2hole)
Bur spplicable:	Ø1.59-Ø1.6mmx21-23mm
Rotation speed:	≥ 300,000rpm

Model: CX207

High-speed air turbine handpieces



Order code:210-S



Standard head Order code: **H01-S4** ☺
H01-S2 ☺



Order code:210-SP



Standard head Order code: **H01-SP4** ☺
H01-SP2 ☺



Order code:210-TP



Torque head Order code: **H01-TP4** ☺
H01-TP2 ☺



Order code:210-TP



Torque head Quick coupling Order code: **H01-TPQ4** ☺
H01-TPQ2 ☺



Order code:210-D-SP



Standard head 45° Order code: **H01-D1SP4** ☺
H01-D1SP2 ☺

**INNER CHANNEL
LOW SPEED HANDPIECE**

Model: CX235

Dental low speed handpieces



Inner fiber
Inner channel water

Inner fiber .360 degrees of freedom rotary interface, avoid swinging to lead to prevent the handpiece wire be tensioned ,unencumbered function of light .free to transform , reduce fatigue

Perfect LED light source

**INNER CHANNEL
LOW SPEED HANDPIECE**

Model: CX235

Dental low speed handpieces



Technical:

Low speed handpiece:	1 way spray
Chuck type:	push button
Noise:	≤70dB
Air pressure:	0.30MPA
Bur spplicable:	∅2.35 _{-0.011} mm(ISO1797-1)
Rotation speed:	about20,000rpm



Optic fiber inner channel Order code: 235-C SET-6



inner channel Order code: 235-B SET-4
235-B SET-2

OPTIC FIBER



6 hole

360 degrees of freedom rotary interfa

Technical:

Low speed handpiece:	1 way spray
Chuck type:	push button
Noise:	≤70dB
Air pressure:	0.30MPA
Bur spplicable:	∅2.35 _{-0.011} mm(ISO1797-1)
Rotation speed:	about20,000rpm



Generator in contra angle



inner channel LED Order code: 235-E SET-4
235-E SET-2

**EXTERNAL
LOW SPEED HANDPIECE**

Model: CX235

Dental low speed handpieces



External Order code: **235-F SET-4**
235-F SET-2



External Order code: **235-A SET-4**
235-A SET-2



Inner channel Order code: **235 SET-4**
235 SET-2

**CONTRA ANGLE
LOW SPEED HANDPIECE**

Model: CX235

Dental low speed handpieces

(1:5, 1:1, 4:1, 10:1, 16:1, 20:1, 64:1)



**INNER CHANNEL
CONTRA ANGLE**

Model: CX235

Dental low speed handpieces

1.5 speed increase

Technical:

Low speed handpiece: 1.5 speed
 Chuck type: push button
 Spray: Inner channel
 Bur applicable: Ø1.6mm
 Rotation speed: about 200,000rpm



Stale, quiet and large torque cartridge

Skillful workmanship, reliable in quality

Specially for the European style, comfortable feeling



optic fiber



Order code: C7-1
Optic fiber



Order code: C7-2

**EXTERNAL
CONTRA ANGLE**

Model: CX235

Dental low speed handpieces

20:1 reduction

Technical:

Low speed handpiece: 20:1 speed
 Chuck type: push button
 Spray: Inner channel and external
 Bur applicable: Ø2.35_{0.010}mm (ISO1797-1)
 Max speed: 2,000RPM

For implant

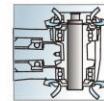
Internal cooling system: Kirschner / Meyer



Optic fiber
 Fiber optic lighting system, more clear vision



Easy to disassemble without tool
 C6-22 can be disassembled with a simple twist for easy internal cleaning, however, when attached to a motor, unique locking mechanism makes sure the handpiece will not disassemble



Double sealing system

Original double sealing system reliably prevents blood and bodily fluids from entering the instrument head. This guarantees longevity of the instruments.



NEW



Optic fiber Order code: C6-22



Order code: C6-19

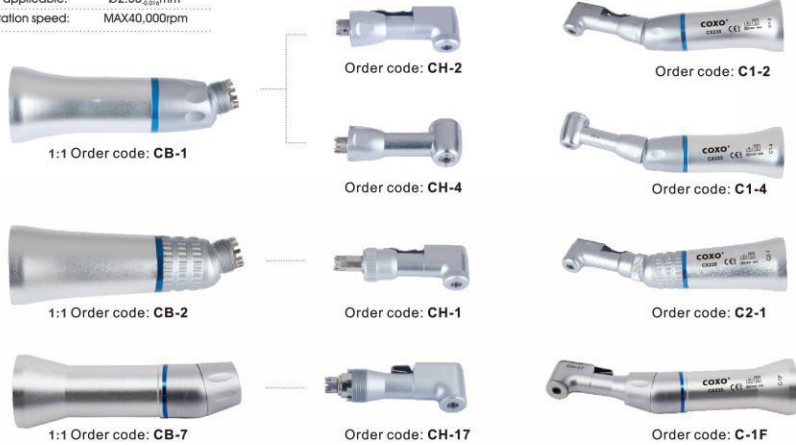
**EXTERNAL
CONTRA ANGLE**

Model: CX235

Dental low speed handpieces

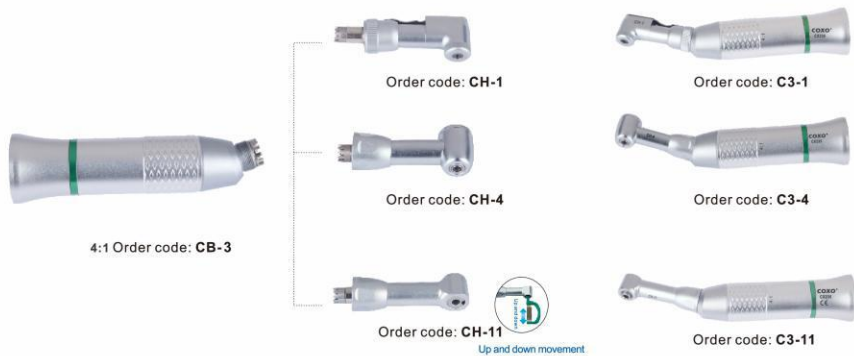
1:1 Direct drive

Low speed handpiece: 1:1 direct drive
 Chuck type: push button or wrench
 Spray: external
 Bur applicable: $\varnothing 2.35_{\pm 0.01}$ mm
 Rotation speed: MAX 40,000 rpm



4:1 Reduction

Low speed handpiece: 1:1 direct drive
 Chuck type: push button or wrench
 Spray: external
 Bur applicable: $\varnothing 2.35_{\pm 0.01}$ mm
 Rotation speed: MAX 10,000 rpm



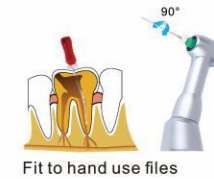
**EXTERNAL
CONTRA ANGLE**

Model: CX235

Dental low speed handpieces

10:1 Reduction

Low speed handpiece: 10:1 Reduction
 Chuck type: push button
 Spray: external
 Bur applicable: engine use file/hand use file
 Rotation speed: MAX 4,000 rpm
 Rotation style: 90° reciprocating rotate head



64:1 Reduction

Low speed handpiece: 64:1 Reduction
 Chuck type: push button or wrench
 Spray: external
 Bur applicable: $\varnothing 2.35_{\pm 0.01}$ mm
 Rotation speed: MAX 625 rpm



INNER CHANNEL STRAIGHT Model: CX235

1:1 Direct drive

Low speed handpiece: 1:1 direct drive
 Chuck type: push button
 Spray: Inner channel
 Bur applicable: Ø2.35_{mm}
 Rotation speed: MAX40,000rpm



LED LIGHT GENERATOR



Order code: C-1E



Order code: C-1C



Order code: C-1B

Dental low speed handpieces

AIR MOTOR LOW SPEED HANDPIECE Model: CX235

1:1 Direct drive

Low speed handpiece: 1:1 direct drive
 Spray: Inner channel or External
 Hole type: 6 hole or 4 hole or 2 hole
 Rotation speed: 20,000rpm



Optic fiber



Order code: M-3C



Order code: M-3B-4
M-3B-2



EXTERNAL Order code: M-3F-4
M-3F-2

Dental low speed handpieces

EXTERNAL STRAIGHT Model: CX235

1:1 Direct drive

Low speed handpiece: 1:1 direct drive
 Spray: Inner channel or External
 Bur applicable: For surgical Ø2.35_{mm}
 Rotation speed: MAX40,000rpm



Order code: S-2S
surgical operation 20°
straight head



Order code: S-2S2
surgical operation
straight head



INNER CHANNEL

Order code: S-2C



Order code: S-2B



Order code: S-2F



EXTERNAL

Order code: S-2A



Order code: S-2

Dental low speed handpieces

**ECONOMICAL
COMPLETE KIT**

Model: CX235

Dental handpieces

1:1 Direct drive



Order code: **H01-1 KIT-SP4**
H01-1 KIT-SP2

STUDENT HANDPIECE KIT

- 1PCS Anti-retraction high speed standard push handpiece
- 1PCS contra angle
- 1PCS straight head
- 1PCS low speed air motor
- 1PCS push button cartridge <Free>



Order code: **H01-2 KIT-S4**
H01-2 KIT-S2

HANDPIECE KIT

- 2PCS high speed standard handpiece
- 1PCS contra angle
- 1PCS straight head
- 1PCS low speed air motor
- 1PCS standard cartridge <Free>



Order code: **H01-2 KIT-SP4**
H01-2 KIT-SP2

HANDPIECE KIT

- 2PCS standard push handpiece
- 1PCS contra angle
- 1PCS straight head
- 1PCS low speed air motor
- 1PCS push button cartridge <Free>



Order code: **H01-1 KIT-S4**
H01-1 KIT-S2

HANDPIECE KIT

- 1PCS high speed standard handpiece
- 1PCS contra angle
- 1PCS straight head
- 1PCS low speed air motor
- 1PCS standard cartridge <Free>



Handpiece Accessories
Manufacturing all kinds of spare parts for handpiece

HANDPIECE ACCESSORIES

Cartridge of high speed handpiece








FOR KaVo®	Order code:
 KAVO 4500	K01
 KAVO650 PB	K03
 KAVO 8000	K04
 KAVO 6500B PB TURBINE	K05
 KAVO 655PB/660B/C	K06
 KAVO 625/630/640PB/625/625C/625D/603/606/607/627	K07
 KAVO 659B	K08
 KAVO 635PB/637B	K09
 KAVO 636/646 KAVO 625CD	K10
 KAVO PB TURBINE 632/633/645 Bella torque 639/642/643	K11
 KAVO 634 MAGNO KAVO 634 PB COMPANION KAVO 604/632/632DA	K12
 KAVO647/649PB	K15
 KAVO PB6000/7000	K16

71 Handpiece accessories

HANDPIECE ACCESSORIES

Shaft of cartridge

	ORDER CODE
 For NSK For W&H For KaVo L.12.6mm (long)	245-4-1
 For NSK For W&H For KaVo L.11.8mm (short)	245-4-2
 For NSK L.13.5mm (long)	245-2
 For NSK L.12.8mm (short)	245-3
Generator	
	ORDER CODE 245-52

FOR W&H	Order code:
 W&H617 TA-96 SYNEA PB MINI	W01
 C-SWSABT /Trend	W02
 W&H Sabra PB small	W03
 W&H 198 TOP AIR 198/898	W04
 W&H Synea TA-98 large PB turbine/ ALLEGRA TE95/TE98	W05
 W&H196/896 TOP AIR	W07
 W&H TA-97	W08

FOR NSK®	Order code:
 NPA-S03	standard 210-S
 NPA-T03	torque 210-T
 NPA-SU03	standard 210-SP
 NPA-TU03	torque 210-TP
 PAX-SU03	standard 210-A-SP
 PAX-TU03	torque 210-A-TP
 NMC-SU03 (MC-GD)	standard 210-M-SP

HANDPIECE ACCESSORIES

Bulb(LED light)

	ORDER CODE
 For NSK (for 229-GN)	261-1
 (for 229-GW)	261-2
 For Sirona (for 229-GS)	261-6
 For KaVo (for 229-GK)	261-3
 (for 207-GL)	261-4
 (for 207-F/ 207-FD)	261-5



HANDPIECE ACCESSORIES

Head cup of handpiece

	ORDER CODE
 Standard back cap (wrench chuck) (For H01-S)	245-5
 Torque back cap (wrench chuck) (For H01-T)	245-6
 Standard back cap (push chuck) (For H01-SP)	245-7
 Torque back cap (push chuck) (For H01-TP)	245-8
 Standard back cap (push chuck) (For NSK PANA-MAX)	245-31
 Torque back cap (push chuck) (For NSK PANA-MAX)	245-32
 Torque back cap (push chuck) (For H08-L)	245-35
 Mini back cap (push chuck) (For H03-MP)	245-36
 Standard back cap (push chuck) (For H13/14/15/16/ 17/23/25-SP) (For H15-88P)	245-37
 Torque back cap (push chuck) (For H13/14/15/16/ 17/23/25-TP) (For H15-8TP)	245-38
 Cover for contra angle cartridge (For CH-1)	245-17
 Cover for contra angle cartridge (For CH-13)	245-39
 Cover for contra angle cartridge (For CH-9)	245-40
 Standard back cap (push chuck) (For H02-SP)	245-57
 Torque back cap (push chuck) (For H02-TP)	245-58

HANDPIECE ACCESSORIES

Wave gasket of handpiece

	ORDER CODE
 for NSK/W&H wave gasket	245-50
 for NSK/W&H wave gasket	245-51

HANDPIECE ACCESSORIES

Bearing of handpiece

	ORDER CODE
 Myonic bearing (Ø6.35XØ3.175X2.38) For NSK For W&H For KaVo For Sirona	245-18
 Steel bearing (Ø6.35XØ3.175X2.38) For NSK For W&H For KaVo For Sirona	245-11
 Steel bearing with cover (Ø6.35XØ3.175X2.38) For NSK For W&H For KaVo For Sirona	245-12
 Ceramic bearing (Ø6.35XØ3.175X2.38) For NSK For W&H For KaVo For Sirona	245-13
 Ceramic bearing with cover (ø6.35Xø3.175x2.38) For W&H For KaVo	245-19
 Steel bearing (ø6.35Xø3.175x2.78) For W&H For KaVo	245-23
 Steel bearing with step (ø6.35Xø3.175Xø5.97 X2.38X1.0) For KaVo	245-20
 Steel bearing with step (ø6.35Xø3.175Xø5.97 X2.78X1.0) For KaVo	245-22
 Steel bearing (ø3.175Xø7.938Xø3.571) For Bien air	245-30
 Steel bearing for straight head (Ø8XØ4X3)	245-14
 Steel bearing for straight head (Ø10XØ5X4)	245-15
 Steel bearing for push button contra angle (ø7Xø4x2) For NSK For W&H For KaVo	245-24
 Steel bearing for shaft of contra angle (ø5Xø2x2.5) For NSK For W&H For KaVo	245-25
 Steel bearing for contra angle (ø7Xø4x2.5) for CX235-2B	245-26
 Steel bearing for straight head (ø8Xø5x2.5) for CX235-2C	245-27
 Steel bearing for contra angle or motor (ø7.938Xø2.38x3.572) For NSK For W&H For KaVo For Sirona	245-28
 Steel bearing for contra angle (ø6Xø3x2) For NSK For W&H For KaVo For Sirona	245-29
 Steel bearing for mini contra angle (ø6.5Xø4x1.3) For NSK For W&H For KaVo For Sirona	245-56

72 Handpiece accessories










HANDPIECE ACCESSORIES

Head set of contra angle

	ORDER CODE
 for NSK (for CA burs ± 2.35) Max.40,000RPM	CH-2
 for NSK (for CA burs ± 2.35) Max.40,000RPM	CH-4
 for KaVo (for CA burs ± 2.35) Max.40,000RPM	CH-18
 for NSK Lock of contra angle	245-49

HANDPIECE ACCESSORIES

Quick coupling of high speed handpiece

	ORDER CODE
 NEW for KaVo® (LED/ 6 hole) With Generator	229-GK3
 fit into NSK machilite/ phatelus® (LED/optic fiber/6 hole)	229-GN
 fit into W&H Roto Quick® (optic fiber/6 hole)	229-GW
 fit into Sirona R/F (LED/optic fiber/6 hole)	229-GS
 fit into KaVo® MULTiteb® LUX (LED/optic fiber/6 hole)	229-GK
 fit into KaVo® MULTiteb® LUX (LED/optic fiber/6 hole)	229-GK1
 for KaVo® (4 hole)	229-GK2
 for NSK (4 hole)	229
 for NSK (2 hole)	229-1
 (For H17-SPQ4,H17-TPQ4) (4 hole)	229-b
 (For H17-SPQ2,H17-TPQ2) (2 hole)	229-1b
 245-55 4 or 6 hole gasket	
 245-10 2 hole gasket	

ORDER CODE

 for NSK (for CA burs ± 2.35) Max.30,000RPM (MINI head)	CH-13
 for NSK (for file burs) Max.4000RPM	CH-12
 for NSK (for CA burs ± 2.35) Max.40,000RPM for Implant	CH-9
 (for CA burs ± 2.35) for Endodontic treatment	CH-17M
 (for CA burs ± 2.35) for Endodontic treatment	C2-1M
 (for CA burs ± 2.35) for Endodontic treatment	C1-17M
 (for CA burs ± 2.35) for Endodontic treatment	C1-19M
 (for CA burs ± 2.35) for Endodontic treatment	C4-19M

HANDPIECE ACCESSORIES

Cartridge of contra angle

	ORDER CODE
 (for C7-1,C7-2) push button	235-53
 (For C-1E, C-1C,C-1B,C1-4) push button	235-13-3
 for NSK	235-9
 (For C2-1, C1-2)	235-12
 (for C6-19)	235-30

HANDPIECE ACCESSORIES

Shaft of contra angle

	ORDER CODE
 (for C6-19)	235-25
 (for C6-9)	235-26
 (for C5-12/C5-12M)	235-28
 (for NSK) (for C1-2/C2-1)	235-8
 (for C1-4/C2-3) push button	235-19
 (for C4-11)	235-20
 (for C4-10)	235-21
 (for C-1C/C-1E) (for C-1B)	235-23
 (for C-1F)	235-24
 For KaVo 68LH/ 68LDN/68G/52LDN	235-29
 (for C7-1, C7-2)	235-54












Gear of shaft

	ORDER CODE
 for NSK	235-8-1



Volume	Model	Volume	Model
$\phi 1.5 \times \phi 0.8$	TY-B-52	$\phi 6.2 \times \phi 0.8$	TY-B-11
$\phi 2.0 \times \phi 0.8$	TY-B-07	$\phi 6.2 \times \phi 1$	TY-B-47
$\phi 2.0 \times \phi 1.0$	TY-B-08	$\phi 6.8 \times \phi 0.8$	TY-B-55A
$\phi 2.5 \times \phi 1.0$	TY-B-22	$\phi 8 \times \phi 0.5$	TY-B-13
$\phi 4.2 \times \phi 0.85$	TY-B-56	$\phi 11 \times \phi 1.0$	TY-B-03
$\phi 6.0 \times \phi 0.8$	TY-B-19	$\phi 11.5 \times \phi 1$	TY-B-53
$\phi 6.0 \times \phi 1.0$	TY-B-20	$\phi 12 \times \phi 0.6$	TY-B-12
$\phi 6.2 \times \phi 0.7$	TY-B-01	内径 $\phi 1 \times \phi 0.9$	TY-B-30

Accessories of Handpiece

	ORDER CODE
	254-2
	254-3
	254-4
	211
	254-10
	245-16
	245-45
	245-46
	245-48
	244-1
	244



OEM, ODM Service
Provide OEM,ODM Service

COXO has improved the design innovation system and a strong research and development capabilities, we can control the whole manufacture process according to the customers' requirements

HIGH FREQUENC
AIR SCALER

Model: CX207

High-speed air turbine handpieces

MOQ:100PCS



Myonic bearing
LED Blue
3 way spray,3air
Head and cartridge with
anti-dust structure

Reject welding,
complete head made
by CNC, more stable!

Cartidge passed the Germany
dynamic balance machine test

Fit for **standard, Torque head**
and 45° degree handles, meet
with the dentist use perfectly

Unique quick coupling
with **the generator**

Separated generator with the handle,
free sterilization,
make the handpiece life longer



Order code:
210-F+-SP



Order code:
210-F+-TP



Order code:
210-FD-SP



Standard head
Order code:**H25-SP6**



Torque head
Order code:**H25-TP6**



Standard head 45°
Order code:**H25-DSP6**



Order code:**229-F4**
229-F2



Order code:**H25-3KIT4**
H25-3KIT2

LED handpiece with generator kit
• 1 PCS quick coupling for LED handpiece with generator(2/4 hole)
• 2 PCS standard push optical handpiece with generator
• 1 PCS torque push optical handpiece with generator



Order code:**H25-5KIT4**
H25-5KIT2

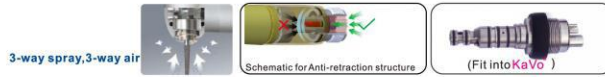
LED handpiece with generator kit
1 PCS quick coupling for LED handpiece with generator(2/4 hole)
2 PCS standard push optical handpiece with generator
1 PCS torque push optical handpiece with generator
1 PCS contra-angle block teeth standard push optical handpiece

**CUSTOM PRODUCT
HANDPIECE**

MOQ:500PCS



**LED HANDPIECE WITH
GENERATOR**



Standard head Complete order code: **H35-SPQ**
Handpiece order code: **H35-SPQ4** ☺



Torque head Complete order code: **H35-TPQ**
Handpiece order code: **H35-TPQ4** ☺

MOQ:500PCS



(For W&H C-SWSAB7/Hand)

**LED HANDPIECE WITH
GENERATOR**



Torque head Order code: **H05-W2TP4** ☺
H05-W2TP2 ☺



CLEAN HEAD SYSTEM

Torque head Order code: **H01-W2TP4** ☺
H01-W2TP2 ☺

MOQ:300PCS



**LED HANDPIECE WITH
GENERATOR**



Standard head Order code: **H15-8SP4** ☺
H15-8SP2 ☺



**LED HANDPIECE WITH
GENERATOR**

Torque head Order code: **H15-8TP4** ☺
H15-8TP2 ☺

Model: CX207

High-speed air turbine handpieces

MOQ:300PCS



Order code: **K07**
Torque
(For KaVo®630PB)



Order code: **W08**
Torque
(For W&H TA-97)



Order code: **W05**
Torque
(For W&H Synea TA-98)



Order code: **210-S1-SP**
Standard
(For Sirona® T3 Racer)



Torque head Order code: **H01-K1TP4** ☺
H01-K1TP2 ☺



Standard head Order code: **H01-W1SP4** ☺
H01-W1SP2 ☺



Torque head Order code: **H01-W1TP4** ☺
H01-W1TP2 ☺



Standard head Order code: **H01-S1SP4** ☺
H01-S1SP2 ☺

MOQ:300PCS



Easy to replace bulb
LED bulb,protable
LED bulb changing design



LED HANDPIECE

Torque head Order code: **H06-GL** ☺

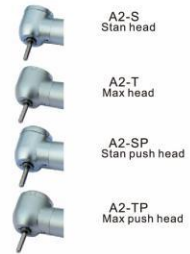
CUSTOM PRODUCT
HANDPIECE

MOQ:500PCS

▼ 3 way spray 3 air spray handpiece



▼ Clean head system handpiece



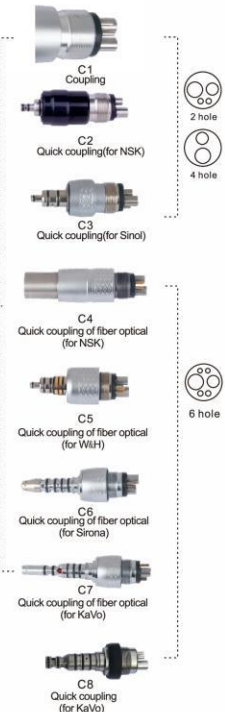
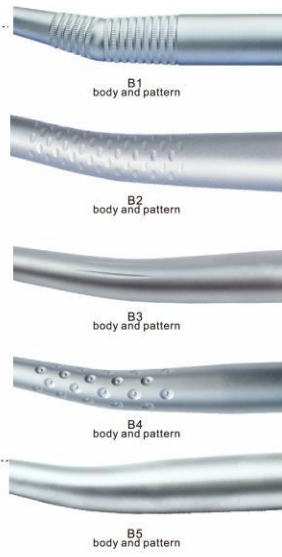
▼ Three way spray handpiece



▼ LED handpiece with generator



▼ Fiber optical handpiece



COXO could Provide OEM,ODM service,and COXO have some handpiece style and pattern provide customers choice, Choose as shown in figure:



Dental Accessories
Professional dental products manufacturer



Model: CX249

LED dental lamp



order name: **CX249-23**

Feature:

- 1-Free movement of 3axes,positioning the light to where you want.
- 2-Removable handles,easy to clean and easy to mount and dismount.
- 3-Optimized color of light,color temperature range from 5500-6500K,similar just like the natural light from your window,the power of light from 450-550 is limited to minimize the effect on the sensitive material use for the restoration.
- 4-Factory calibrated at 700mm(the average length of the human arm).a precise 80X160 rectangular light pattern with uniform intensity is produced.out side the light pattern there are 50% lower illustration level compare to specified requirement in ISO standard-illumination occurs only where you want it to in the oral cavity.not in the patient's eyes.

Technical:

Power supply:	AC12-24V
Power consumption:	6-10W
LED light:	6 PCS
Light intensity(lux):	>40000LUX
Dimension of pattern:	80X160mm(in the 700mm)
Dimensions of working area:	5000-5300k
Colour temperature:	85%
CRI:	<ø12mm
Shadow(solution)	<200lux
Eye intensity(lux):	20-80mm
Interacton range:	ø22
Joint dimension:	1.6kg
Weight(kg)/PCS	carton



6 high power LEDs Space for camera system reserved



Removable handles,easy to clean.



Adjustable illumination (stepless), color temperature in the range of 5000K and 5300K.As a natural light, reduce damage to the eyes during long time operation.



Free movement of 3 axes,positioning the light to where you want.



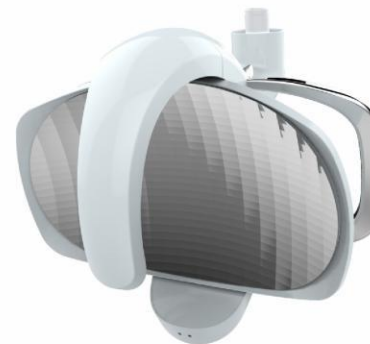
Double control system (sensor and switch)



The color and color temperature for the whole light spot are the same,greatly reduce the color separation through the lens,as well as the effect to the light sensitive material.

Model: CX249

LED dental lamp



order name: **CX249-22**
Reflectance

Feature:

- 1-Super-intense Illumination
- 2-Complete shadowless
- 3-Multi-angle adjustable
- 4-Life cycle of the LED can reach 17 years
- 5-Natural color temperature

Technical:

Power supply:	AC12-24V
Power consumption:	6W
LED light:	1 PCS
Light intensity(lux):	>35000LUX
Dimension of pattern:	80X160mm(in the 700mm)
Dimensions of working area:	5000-6000k
Colour temperature:	85%
CRI:	<ø12mm
Shadow(solution)	<200lux
Eye intensity(lux):	20-80mm
Interacton range:	ø22
Joint dimension:	1.75kg
Weight(kg)/PCS	carton



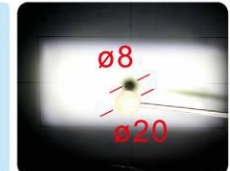
Bionic Design,Patented Design



Almost 300 reflective palta, the projecting plane of them are more than Ø180. sensor range is 20mm-80mm



Gripping comfort and easy operation, removable cleaning



Shadowless effect is good.actual measure is Ø8.

Model: CX249

LED dental lamp



order name: **CX249-21**
Reflectance

Feature:

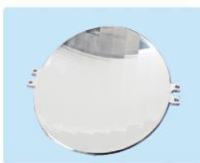
- 1-The light is soft, won't hurt your eyes, adpot CRI makes the shining face more realistic.
- 2-No color separation: the color and the color temperature for the whole light spot are the same, greatly reduce the color separation through the lens, as well as the effect to the light sensitive material.
- 3-Light efficiency is higher: The illuminance can reach over 45000 lux when the power is 6W. The reflect mode can reach over 50000lx.
- 4-The LED dental lamp can reach stepless adjustable.

Technical:

Power supply:	AC12-24V
Power consumption:	6W
LED light:	1 PCS
Light Intensity(lux):	>40000LUX
Dimension of pattern:	80X160mm(in the 700mm)
Dimensions of working area:	5000-6000k
Colour temperature:	85%
CRI:	ϕ12mm
Shadow(solution)	<200lux
Eye intensty(lux):	20-80mm
Interatcion range:	ϕ 22
Joint dimension:	1.1kg
Weight(kg)/PCS	carton



The beam spot is rectangular and the size is moderate. (80x160mm at 700mm) And no dazzle light around



The reflector surface is composed of nearly 300 5x20 rectangular reflecting surfaces



Moving near sensor points will be on or off light, the light during light on position, sensor range is 20mm-80mm



Holder shaft cap can be removed for easy maintenance; Knob handle next to the handle for disassembly purposes, Easy to handle clean.

Model: CX249

LED dental lamp



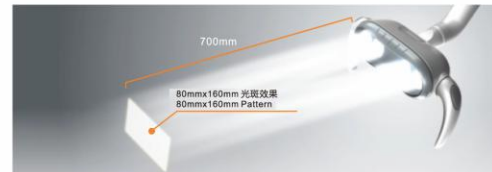
order name: **CX249-4**



order name: **CX249-14**



order name: **CX249-8**



Factory calibrated at 700mm (the average length of the human arm), a precise 80X160 rectangular light pattern with uniform intensity is produced. Out side the light pattern there are 50% lower illustration level compare to specified requirement in ISO standard-illumination occurs only where you want it to in the oral cavity, not in the patient's eyes.



Feature:

- 1-Free movement of 3axes, positioning the light to where you want.
- 2-Removeable handles, easy to clean and easy to mount and dismount.
- 3-The light spot will not effect to the light-sensitive resin.
- 4-Graceful appearance molding just like the pretty girl's eyes, it was appeared in top grade, cause of the reasonable install by six lens.
- 5-The handle can be used by your own angle habit, removeable handles, easy to clean and easy to mount and dismount.

Technical:

Power supply:	AC12-24V
Power consumption:	6W
LED light:	1 PCS
Light Intensity(lux):	>35000LUX
Dimension of pattern:	80X160mm(in the 700mm)
Dimensions of working area:	5000-6000k
Colour temperature:	85%
CRI:	ϕ12mm
Shadow(solution)	<200lux
Eye intensty(lux):	20-80mm
Interatcion range:	ϕ 22
Joint dimension:	1.75kg
Weight(kg)/PCS	carton

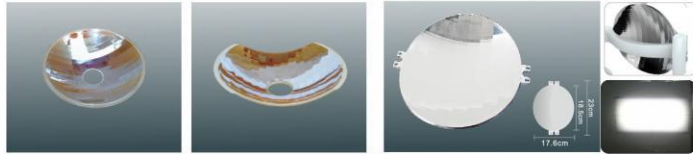
LAMP ARM



CX05-2
LAMP ARM

CX05-1
COLUMN

CX05-3
LAMP ARM

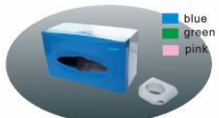


CX70
REFLECTOR(ROUND) Ø150
for CX88

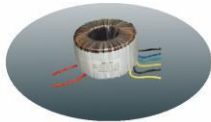
CX69
REFLECTOR(SQUARE) Ø150
for CX01, CX87

CX185-3
REFLECTOR

Almost three hundreds reflective patla,the every patla is a complete flare the projecting plane of them are more than 180°,they are able to ensure the symmetrical of illuminance and symmetrical of color temperature for flare. meanwhile, it got the unexceptionable no shadow effect.



CX186 TISSUE BOX



CX220
TRANSFORMER
190W in put 220v or 110v



CX217-6
ENDOSCOPE FRAME

CX217-3
ENDOSCOPE FRAME

CX217-4
ENDOSCOPE FRAME

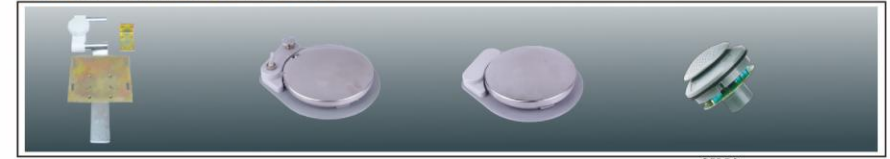
FILM VIEWER



CX90-1
EUROPE STYLE PANORAMA
FILM VIEWER(360X240)

CX07
1#FILM VIEWER(12V)

PILLOW FRAME, FOOT PEDAL

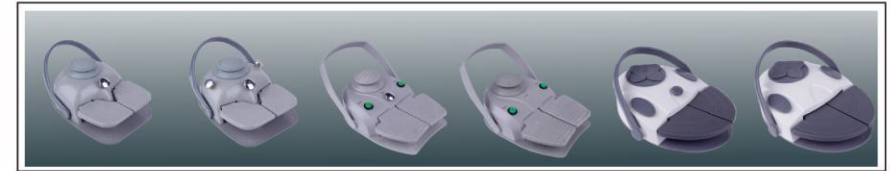


CX57
1#PILLOW SUPPORT

CX92
3#ROUND FOOT PEDAL

CX92-1
4#ROUND FOOT PEDAL

CX59
FOOT PEDAL



CX09
FOOT CONTROL
WITH 4 FUNCTIONS

CX10
FOOT CONTROL
WITH 6 FUNCTIONS

CX10-1
FOOT CONTROL
WITH 6 FUNCTIONS
(Air control)

CX10-2
FOOT CONTROL
WITH 6 FUNCTIONS
(electricity control)

CX10-3
FOOT CONTROL
(Air control)

CX10-4
FOOT CONTROL
(electricity control)

PLASTIC SERIES



CX18
DRAINAGE KIT FOR
SPUTUM BASIN

CX21
2#SINGLE
HOLDER

CX93
2# 5-SEAT
HOLDER

CX93-1
2# 5-SEAT
HOLDER

CX94
3# SINGLE
HOLDER



CX95
DECORATION RING

CX96
STRONG
SUCKING PIPE

CX96-1
WEAK
SUCKING PIPE

CX146
2#HOPPER

CX158
AMERICAN STYLE
HANGER



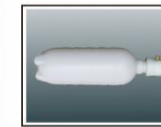
CX157
HANDLE FOR STRONG,
WEAK SUCTION



CX157-1
HANDLE FOR STRONG,
WEAK SUCTION



CX97
STRONG SUCKING PIPE
for CX157 strong



CX31
WATER BOTTLE
1000ml



CX31-1
WATER BOTTLE
600ml



CX33 COVER FOR WATER BOTTLE
 CX97-I STRONG SUCKING PIPE for CX156 strong
 CX97-III SHARP STRONG SUCKING NOZZLE for CX156 weak
 CX101 DIRT COLLECTOR
 CX151 LEAF-SHAPE ROTATABLE PLATE



CX151-I LEAF-SHAPE ROTATABLE PLATE
 CX160-II DRAINAGE T-SHAPE ADAPTOR
 CX187 MULTIPLE DIRECTION DRAINAGE ADAPTOR
 CX171 BIG-BIG-BIG ADAPTOR
 CX173 2BIGS-2SMALLS 4-WAY ADAPTOR



CX223 3-WAY ADAPTOR
 CX160-I DRAINAGE T-SHAPE ADAPTOR
 CX164 SMALL-SMALL ADAPTOR
 CX166 BIG-BIG ADAPTOR
 CX169 SMALL-SMALL-BIG ADAPTOR
 CX170 BIG-BIG-SMALL ADAPTOR

TUBE SERIES



Type	Length(m/roll)
PU3X2mm	200
PU4X2.5mm	200
PU6X4mm	200
PU8X5mm	100

CX67-1
 PU TUBE



CX103 4-HOLE HANDPIECE TUBING
 CX104 2-HOLE HANDPIECE TUBING
 CX105-1 2-HOLE HANDPIECE TUBING(SPIRAL)
 CX107 2-HOLE FOOT CONTROL TUBING
 CX108 4-HOLE FOOT CONTROL TUBING



CX188 OPTICAL TUBING FOR HANDPIECE
 CX188-1 CONTROL BOX FOR OPTICAL HANDPIECE
 CX189 2# 4-HOLE TUBING FOR HANDPIECE
 CX190 STRAIGHT TUBING FOR 3-WAY SYRINGE
 CX191 TUBING FOR SPUTUM SUCKER

VALVE SERIES



CX86 SYRINGE
 CX86-I 3-WAY STRAIGHT SYRINGE
 CX86-II NOZZLE OF 3-WAY SYRINGE
 CX156-1 ALUMINIUM STRONG, WEAK SUCTION
 CX156 ALUMINIUM STRONG, WEAK SUCTION



CX75 WATER EXCHANGE VALVE
 CX75-I PULLDOWN WATER EXCHANGE SWITCH
 CX76 STRONG SUCKING VALVE
 CX78 WEAK SUCKING VALVE
 CX79 DIRECTION EXCHANGER VALVE



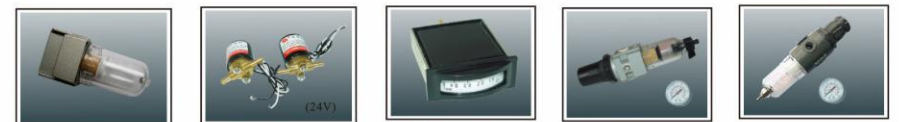
CX80 HOLDER VALVE (Normal open)
 CX80-II HOLDER VALVE (Normal close)
 CX83 GENERAL VALVE
 CX85 AIR SWITCH
 CX193 3 IN 1 VALVE



CX193-1 4 IN 1 VALVE
 CX194 WATER ADJUSTOR
 CX194-I WATER FINE TUNER
 CX196 SINGLE AIR SWITCH
 CX196-1 SINGLE AIR SWITCH



CX198 AIR -ELECTRICAL VALVE
 CX110-1 HEATER 24V
 CX100 2# WATER FILTER



CX202 3# WATER FILTER
 CX109 ELECTRIC-MAGNETIC VALVE (24V)
 CX102 PRESSURE METER
 CX205 AIR REDUCER
 CX205-1 AIR REDUCER



CX36-1
KIT FOR FLUSHING
AND WATER SUPPLY



CX36-2
KIT FOR FLUSHING
AND WATER SUPPLY



CX36-4
WATER PIPE



CX205-2
AIR REDUCER



CX111
2-HOLE COUPLING



CX72
4-HOLE COUPLING



CX199
4-2 ADAPTOR



CX200
2-4 ADAPTOR



CX222
QUICK COUPLING

OIL-FREE AIR COMPRESSOR



CX236
MOTOR OF OIL-FREE AIR
COMPRESSOR (550W)



CX236-5
MOTOR OF OIL-FREE AIR
COMPRESSOR (850W)



1.5EW-30
CX236-2
OIL-FREE AIR COMPRESSOR



2EW-35
CX236-3
OIL-FREE AIR COMPRESSOR



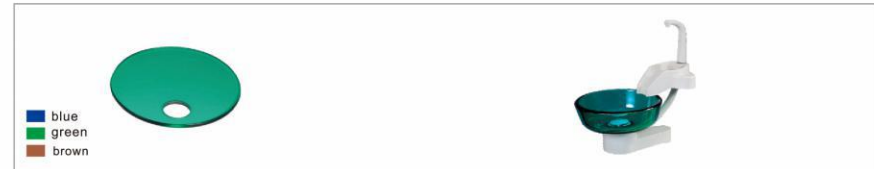
3EW-45
CX236-4
OIL-FREE AIR COMPRESSOR

CUSPIDOR SERIES



CX114
3# CUSPIDOR

CX117
6# CUSPIDOR



CX241-1
ROTATABLE PLATE

CX242-2
SET OF CUSPIDOR



CX216
FRAME OF DENTAL UNIT

CX216-1
FRAME OF DENTAL UNIT

CX231-1
ARM REST

Multiple color selection



CX232-1
DOCTOR'S CHAIR

CX232-3
DOCTOR'S CHAIR

CX232-4
DOCTOR'S CHAIR

CULTURE



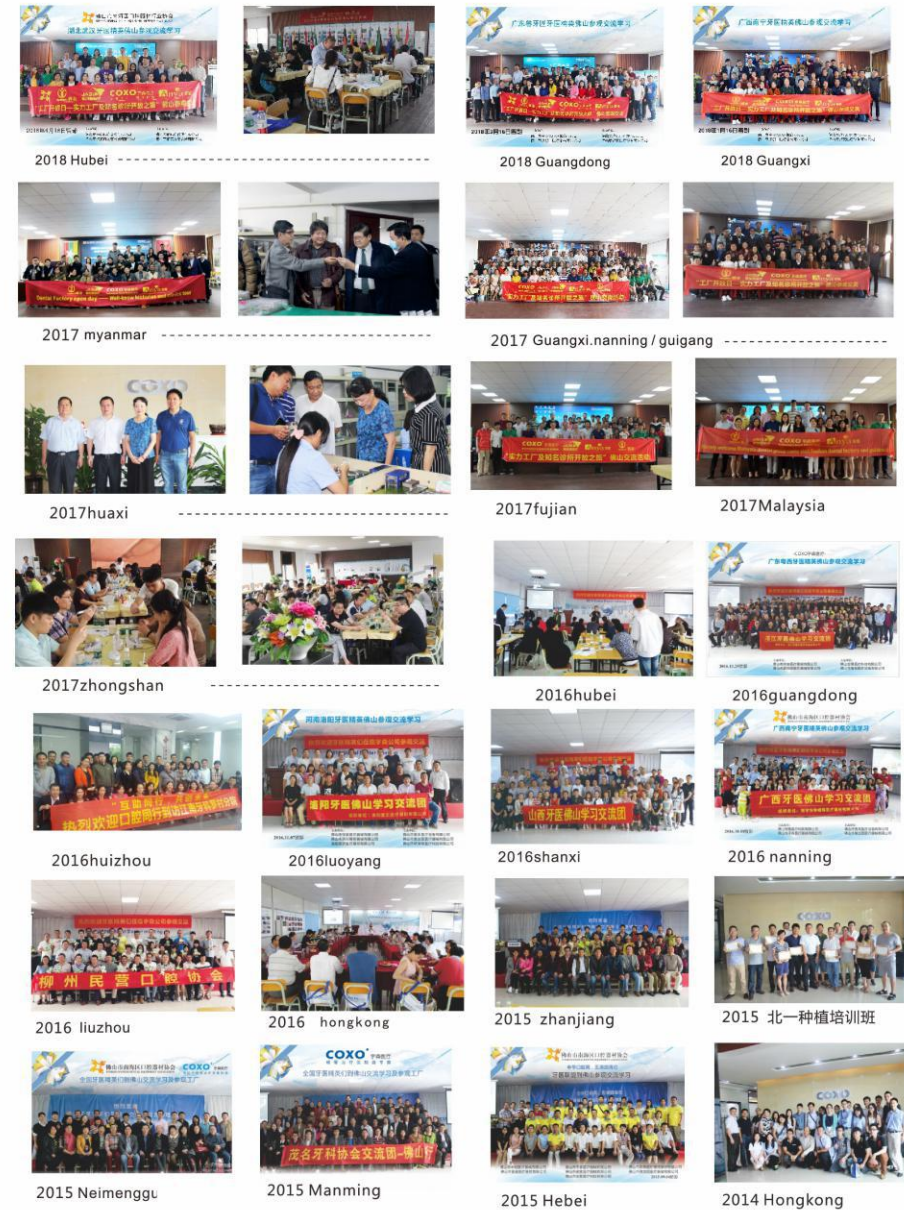
VISITOR



Global dealer meeting



THE FACTORY OPEN DAY



The national tour of dental implant training



2017-8 foshan



2018-4shenzhen



2018-3 hubei



2017-7Shandong



2017-7beiji



2017-7shangdong



2017-6 hubei



2017-6guangzhou



The national tour of minimally invasive repair training



2017-1 guangxi



2016-12hunan



2017-8 guangxi



2017-12 shandong



2017-11 fuzhou



2017-06 changsha



2017-11 guangxi



2017-11 chengdu



The national tour of free rct training



April 2018 Yantai



May 2018 Weifang



Mar.2018 Egypt



Nov.2017Malaysia



Jul.2017Guizhou



Nov.2017baotou



Sep.2017 fuyang



Sep.2017 wuzhong



Sep.2017yanzhou



Aug.2017 Philippines



Nov.2017Egypt



Jul.2017Indonesia



Sep.2017Guiping



Sep. huainan Jun. linyi



Aug.2017shijiazhuang



Apr.2017dalian



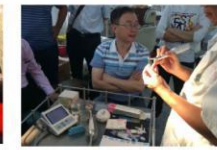
Jun.2017Luoyang



Sep.2016 foshan



Dec.2016 baoji



Aug.2016datong



Aug.2016wulumuqi



Aug.2016 tangshan



July.2016 foshan

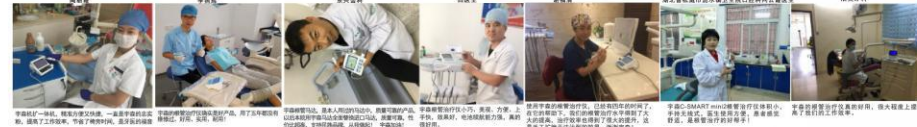


July.2016 quanzhou

Root canal talent contestants Thank you for supporting coxo medical:



参赛者 1-12 号选手在初赛中的精彩表现，展示了他们的专业技能和精湛技艺。每位参赛者都经过了严格的选拔和考核，才能在众多选手中脱颖而出。他们的作品不仅体现了对根充技术的深入理解，也展现了创新思维和团队协作的重要性。评委们对参赛者的表现给予了高度评价，认为他们具备成为未来牙科领域佼佼者的潜力。感谢所有参赛选手的辛勤付出和精彩表现，你们的参与让这个比赛充满了活力和意义。我们将继续关注牙科技术的发展，为提升医疗服务水平贡献力量。



参赛者 13-24 号选手在实验室中展示了他们的材料处理和工艺制作能力。他们利用先进的设备和技术，精心制作了各种复杂的牙科模型和修复体。评委们对参赛者展现出的精细工艺和创新设计能力印象深刻。这些作品不仅具有极高的美学价值，更体现了参赛者对材料特性的深刻理解和灵活运用。感谢所有参赛选手的精心准备和出色表现，你们的努力让这个比赛更加精彩纷呈。我们将继续关注牙科材料和工艺的进步，为提升牙科治疗的舒适度和疗效做出更大贡献。



参赛者 25-36 号选手在临床实践中展示了他们的综合诊疗能力。他们面对复杂的病例，运用所学知识进行了全面的检查和诊断，并制定了个性化的治疗方案。评委们对参赛者的临床思维和解决问题的能力给予了高度评价。这些作品不仅体现了参赛者扎实的理论基础，更展示了他们在实际操作中的应变能力和团队协作精神。感谢所有参赛选手的积极参与和精彩表现，你们的努力让这个比赛更加贴近实际，更具参考价值。我们将继续关注牙科临床技术的提升，为提升患者就医体验做出更大贡献。



参赛者 37-48 号选手在临床实践中展示了他们的综合诊疗能力。他们面对复杂的病例，运用所学知识进行了全面的检查和诊断，并制定了个性化的治疗方案。评委们对参赛者的临床思维和解决问题的能力给予了高度评价。这些作品不仅体现了参赛者扎实的理论基础，更展示了他们在实际操作中的应变能力和团队协作精神。感谢所有参赛选手的积极参与和精彩表现，你们的努力让这个比赛更加贴近实际，更具参考价值。我们将继续关注牙科临床技术的提升，为提升患者就医体验做出更大贡献。



参赛者 49-60 号选手在临床实践中展示了他们的综合诊疗能力。他们面对复杂的病例，运用所学知识进行了全面的检查和诊断，并制定了个性化的治疗方案。评委们对参赛者的临床思维和解决问题的能力给予了高度评价。这些作品不仅体现了参赛者扎实的理论基础，更展示了他们在实际操作中的应变能力和团队协作精神。感谢所有参赛选手的积极参与和精彩表现，你们的努力让这个比赛更加贴近实际，更具参考价值。我们将继续关注牙科临床技术的提升，为提升患者就医体验做出更大贡献。



参赛者 61-72 号选手在临床实践中展示了他们的综合诊疗能力。他们面对复杂的病例，运用所学知识进行了全面的检查和诊断，并制定了个性化的治疗方案。评委们对参赛者的临床思维和解决问题的能力给予了高度评价。这些作品不仅体现了参赛者扎实的理论基础，更展示了他们在实际操作中的应变能力和团队协作精神。感谢所有参赛选手的积极参与和精彩表现，你们的努力让这个比赛更加贴近实际，更具参考价值。我们将继续关注牙科临床技术的提升，为提升患者就医体验做出更大贡献。



参赛者 73-84 号选手在临床实践中展示了他们的综合诊疗能力。他们面对复杂的病例，运用所学知识进行了全面的检查和诊断，并制定了个性化的治疗方案。评委们对参赛者的临床思维和解决问题的能力给予了高度评价。这些作品不仅体现了参赛者扎实的理论基础，更展示了他们在实际操作中的应变能力和团队协作精神。感谢所有参赛选手的积极参与和精彩表现，你们的努力让这个比赛更加贴近实际，更具参考价值。我们将继续关注牙科临床技术的提升，为提升患者就医体验做出更大贡献。



参赛者 85-96 号选手在临床实践中展示了他们的综合诊疗能力。他们面对复杂的病例，运用所学知识进行了全面的检查和诊断，并制定了个性化的治疗方案。评委们对参赛者的临床思维和解决问题的能力给予了高度评价。这些作品不仅体现了参赛者扎实的理论基础，更展示了他们在实际操作中的应变能力和团队协作精神。感谢所有参赛选手的积极参与和精彩表现，你们的努力让这个比赛更加贴近实际，更具参考价值。我们将继续关注牙科临床技术的提升，为提升患者就医体验做出更大贡献。



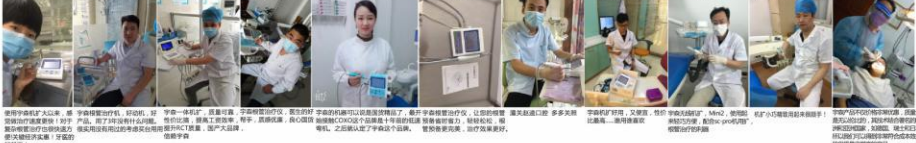
参赛者 97-108 号选手在临床实践中展示了他们的综合诊疗能力。他们面对复杂的病例，运用所学知识进行了全面的检查和诊断，并制定了个性化的治疗方案。评委们对参赛者的临床思维和解决问题的能力给予了高度评价。这些作品不仅体现了参赛者扎实的理论基础，更展示了他们在实际操作中的应变能力和团队协作精神。感谢所有参赛选手的积极参与和精彩表现，你们的努力让这个比赛更加贴近实际，更具参考价值。我们将继续关注牙科临床技术的提升，为提升患者就医体验做出更大贡献。



参赛者 109-120 号选手在临床实践中展示了他们的综合诊疗能力。他们面对复杂的病例，运用所学知识进行了全面的检查和诊断，并制定了个性化的治疗方案。评委们对参赛者的临床思维和解决问题的能力给予了高度评价。这些作品不仅体现了参赛者扎实的理论基础，更展示了他们在实际操作中的应变能力和团队协作精神。感谢所有参赛选手的积极参与和精彩表现，你们的努力让这个比赛更加贴近实际，更具参考价值。我们将继续关注牙科临床技术的提升，为提升患者就医体验做出更大贡献。



参赛者 121-132 号选手在临床实践中展示了他们的综合诊疗能力。他们面对复杂的病例，运用所学知识进行了全面的检查和诊断，并制定了个性化的治疗方案。评委们对参赛者的临床思维和解决问题的能力给予了高度评价。这些作品不仅体现了参赛者扎实的理论基础，更展示了他们在实际操作中的应变能力和团队协作精神。感谢所有参赛选手的积极参与和精彩表现，你们的努力让这个比赛更加贴近实际，更具参考价值。我们将继续关注牙科临床技术的提升，为提升患者就医体验做出更大贡献。



参赛者 133-144 号选手在临床实践中展示了他们的综合诊疗能力。他们面对复杂的病例，运用所学知识进行了全面的检查和诊断，并制定了个性化的治疗方案。评委们对参赛者的临床思维和解决问题的能力给予了高度评价。这些作品不仅体现了参赛者扎实的理论基础，更展示了他们在实际操作中的应变能力和团队协作精神。感谢所有参赛选手的积极参与和精彩表现，你们的努力让这个比赛更加贴近实际，更具参考价值。我们将继续关注牙科临床技术的提升，为提升患者就医体验做出更大贡献。



参赛者 145-156 号选手在临床实践中展示了他们的综合诊疗能力。他们面对复杂的病例，运用所学知识进行了全面的检查和诊断，并制定了个性化的治疗方案。评委们对参赛者的临床思维和解决问题的能力给予了高度评价。这些作品不仅体现了参赛者扎实的理论基础，更展示了他们在实际操作中的应变能力和团队协作精神。感谢所有参赛选手的积极参与和精彩表现，你们的努力让这个比赛更加贴近实际，更具参考价值。我们将继续关注牙科临床技术的提升，为提升患者就医体验做出更大贡献。



参赛者 157-168 号选手在临床实践中展示了他们的综合诊疗能力。他们面对复杂的病例，运用所学知识进行了全面的检查和诊断，并制定了个性化的治疗方案。评委们对参赛者的临床思维和解决问题的能力给予了高度评价。这些作品不仅体现了参赛者扎实的理论基础，更展示了他们在实际操作中的应变能力和团队协作精神。感谢所有参赛选手的积极参与和精彩表现，你们的努力让这个比赛更加贴近实际，更具参考价值。我们将继续关注牙科临床技术的提升，为提升患者就医体验做出更大贡献。



参赛者 169-180 号选手在临床实践中展示了他们的综合诊疗能力。他们面对复杂的病例，运用所学知识进行了全面的检查和诊断，并制定了个性化的治疗方案。评委们对参赛者的临床思维和解决问题的能力给予了高度评价。这些作品不仅体现了参赛者扎实的理论基础，更展示了他们在实际操作中的应变能力和团队协作精神。感谢所有参赛选手的积极参与和精彩表现，你们的努力让这个比赛更加贴近实际，更具参考价值。我们将继续关注牙科临床技术的提升，为提升患者就医体验做出更大贡献。

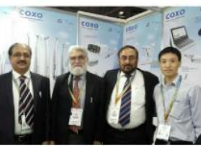
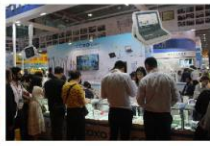


参赛者 181-192 号选手在临床实践中展示了他们的综合诊疗能力。他们面对复杂的病例，运用所学知识进行了全面的检查和诊断，并制定了个性化的治疗方案。评委们对参赛者的临床思维和解决问题的能力给予了高度评价。这些作品不仅体现了参赛者扎实的理论基础，更展示了他们在实际操作中的应变能力和团队协作精神。感谢所有参赛选手的积极参与和精彩表现，你们的努力让这个比赛更加贴近实际，更具参考价值。我们将继续关注牙科临床技术的提升，为提升患者就医体验做出更大贡献。

COXO EXHIBITION SHOW



April 2018 Guangzhou



Feb.2018 Dubai

Dec.2017 India



Nov.2017 France



Sep.2017 Indonesia



Otc.2017 Shanghai

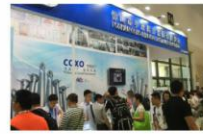
Sep.2017 Russia



May.2017, Iran



Mar.2017, shenyang



Jun.2017,beijing



Mar.2017, Germany



Mar.2017, guangzhou



Feb.2017, Egypt



Oct. 2016 Shanghai



Sep.2016shanghai



Feb. 2016 Brazil



Feb.2016 dubai



Nov.2016 French



Jun.2016beijing



Mar2016, Guangzhou



June 2015,Beijing



Apr 2015,Guangzhou



Mar 2015,Germany



Mar 2015,Dubai



Nov. 2014, Paris



we know you want more than this even after you browsed all of the products in this book.

As the first professional manufacturer to supply the full series of components for dental chair unit, we are trying to make your China trip more comfortable and more simple, along this spirit, we make your one-stop purchasing dream be reality by our professional service and high-quality products with cheaper price. Today, our products have been sold to all over the world and our services have been extended to the whole world as well, and we have built up long term cooperation with a lot of manufacturers and distributors.

What we can do for you is:

one-stop purchasing service

Supply many kinds of products and components for you.

Introduce, recommend excellent dental chair manufacturers to you.

Offer you the services of inspection, loading, and logistic, etc.

And.....all you need in China.

Thanks for your attention, let's hold hands and remain our cooperation forever!

Welcome to visit our factory or contact us any time.



EXHIBITION PREVIEW

1



(SINO-DENTAL)

Place:China national convention center(beijing)
Time:2018.6.9-12
Welcome to our booth:A76-80

2



www.dentech.com.cn

Place:National exhibition and convention center(shanghai)
Time:Otc.10.31-11.03,2018
Welcome to our booth:T11-12,T31-34